

## the plough ARTS CENTRE

9-11 Fore Street  
Great Torrington  
Devon  
EX38 8HQ

mail@theploughartscentre.org.uk  
www.theploughartscentre.org.uk

## the plough @Resurgence, Hartland

School Ln, Hartland, Bideford  
Devon EX39 6BS

## the plough @LyntonTownHall

Lee Rd, Lynton Devon EX35 6BS

## the plough @ St Anne's

Paternoster Way  
Barnstaple  
Devon  
EX31 1SX

sharon@theploughartscentre.org.uk  
www.theploughartscentre.org.uk

### YOUR BOOKINGS

Box office is open from 10.30am from Tuesday to Saturday, closing at 4pm (4.30pm Saturday) and re-opening 6pm-10pm.

The box office has a 24 hour answer-phone service:  
**01805 624624**

- We do not take reservations; tickets must be paid for at the time of booking by cash or card
- We are unable to offer refunds unless a performance is cancelled. We will try to resell unwanted tickets if an event is sold out. There is an admin charge of £1 per tickets resold
- Booking administration fee – A 5% fee will be applied to all bookings
- We ask all customers for a charitable donation towards our core costs

### YOUR VISIT

- Public disabled parking with level access within 20 metres
- Full access to ground floor facilities including auditorium
- Accessible toilet
- Lift access to gallery

- Assistance dogs welcome
- Free companion seat
- Dementia Friendly staff
- Last bus to Bideford and Barnstaple at 21.51pm
- Community Transport – Torrridge Volunteer Cars 01237 237200
- We welcome well behaved dogs in the bar and café
- We are breast-feeding and child friendly and have baby changing facilities

### SUPPORTERS

In return for a modest annual subscription Plough

Supporters get some great benefits:

- Priority booking for many high-profile events
- £1 off full price film tickets
- Up to 25% off live events and workshops.
- £30 Individual (includes £15 donation)
- £50 Joint (includes £25 donation)
- £30 Single Parent Family (includes £15 donation)
- £50 Family with children under 18yrs (includes £25 donation)
- Lifetime Supporters: Minimum donation: £375 (Individual) or £750 (Joint).

## Thank you for your support!

The Plough Arts Centre is a Registered Charity and relies on grants from trusts and foundations to support community projects, buy replacement equipment and refurbish our 110 year old building.

We would especially like to thank the following organisations: Arts Council England, The National Lottery, Great Torrridge District Council, Garfield Weston, Claire Milne, Davie Barnstaple Trust, Devon Community Foundation and Torrington Town Alms.

Huge thanks also to our Business Supporters - you will find a list of these companies on our website. They are listed on our website and in this programme together with their adverts.

The Open Air Theatre season 2023 was kindly sponsored by Bond Oxborough Phillips.

We also receive regular grants from Barnstaple Town Council to run ThePlough@St Anne's and Great Torrington Town Council towards our core costs at The Plough Arts Centre.

The Plough Arts Centre is a registered charity no. 1093715 and a company limited by guarantee no. 4404875.

SCAN ME!



**the plough**  
**ARTS CENTRE**

**THE CREATIVE HUB IN YOUR COMMUNITY!**

**Great Torrington**

**the plough**

@Resurgence, Hartland

**the plough**

@StAnne's Barnstaple

**the plough**

@LyntonTownHall



**SEPTEMBER 2023 - FEBRUARY 2024 PROGRAMME**

**SEE INSIDE BACK COVER FOR SEPTEMBER FILM PROGRAMME**

**BOX OFFICE TEL: 01805 624624 • [www.theploughartscentre.org.uk](http://www.theploughartscentre.org.uk)**



Supported using public funding by  
**ARTS COUNCIL  
ENGLAND**

## Box Office

mail@theploughartscentre.org.uk  
01805 624624

## Director / Programmer

Richard Wolfenden-Brown  
richard@theploughartscentre.org.uk

## Marketing Manager

Sara Pruce  
sara@theploughartscentre.org.uk

## Gallery Director / Visual Arts / Fundraiser

Peter Stiles  
peter@theploughartscentre.org.uk

## Plough Youth Theatre & Outreach Director

Katherine Lockett-Clarke  
katherine@theploughartscentre.org.uk

## ThePlough@StAnne's

Sharon Dixon (Welcome Manager)  
sharon@theploughartscentre.org.uk  
07988 917515

**Café & Bar:** Charlies@The Plough  
charlies@theploughartscentre.org.uk  
01805 625925

## Admin Manager

Rich Crossman  
rich@theploughartscentre.org.uk

**Admin: 01805 622552**

The Plough is a registered charity no.1093715 and a company limited by guarantee (No. 4404875). The management reserve the right to change everything in this programme. Please check our website or call the box office on 01805 624624 for up to the minute information, as we live in a time of change!



ThePloughArtsCentre



@PloughArts



@PloughArts

# WELCOME TO...

The Plough Arts Centre, Great Torrington,  
ThePlough@StAnne's, Barnstaple,  
ThePlough@Resurgence, Hartland  
ThePlough@LyntonTownHall

## Use it or...use it even more!

We are proud of this packed programme and encourage you to dig deep to discover some of the hidden gems and opportunities that lie within it.....

As we start to expand our arts provision across the region via ThePlough@StAnne's in Barnstaple, ThePlough@Resurgence in Hartland and ThePlough@LyntonTownHall, please make sure you go to the right venue for your chosen event! Thanks to Arts Council England, The National Lottery and all our local funders and Individual & Business Supporters, for making this expansion of our arts and community programme possible.

Thanks for making The Plough your provider of choice for high quality live events, exhibitions, film screenings, participatory arts workshops, drinks and lunch! Call Charlie on 01805 625925 to book a table for lunch (Tues– Sat) or dinner (Thurs – Sat).

The Plough Arts Centre is funded by



Supported using public funding by  
**ARTS COUNCIL  
ENGLAND**



The Clare Milne Trust  
Endorsing Loans at the South West



Use  
Your  
Plough!



Many events and workshops are filling up fast! To receive a weekly reminder by e-mail of all that is going on and to hear first about additions to our programme, please contact sara@theploughartscentre.org.uk to join the list.

See inside back cover for Sept film screenings. For more details and for information on films from Oct 2023 onwards, please visit our website [www.theploughartscentre.org.uk](http://www.theploughartscentre.org.uk) or pick up a film flier at the box office.

We look forward to welcoming you soon.

**Richard Wolfenden-Brown, Director and all Staff, Volunteers and Trustees**

**STOP PRESS!** As we go to print we have just learnt that we have received an award from the national community lottery towards our core costs and a grant from the Claire Milne Trust towards our work with adults with disabilities. A HUGE thanks to both and we'll be making further announcements about both awards and the new work that we'll be able to do on our social media shortly.



# Charlies

@ THE PLOUGH

Serving hot & cold beverages,  
delicious home-made bakes, light lunches  
and evening meals.

**Tues - Sat 10.30am-2.30pm**

**Thurs - Sat 6pm-9pm**

*Reservation recommended for evening meals.*

**Tel: 01805 625925**

**charlies@theloughartscentre.org.uk**

Find us on TripAdvisor



## INDEX

Live Events	2-13
Future Events	13
Haunted History Tours	14
Youth Theatre / Outreach	15
Ongoing Workshops	16
Workshops & Courses	17-23
Exhibitions	24-25
Films	36-37
Location / Info	Back Cover

Do you...  
...want to learn NEW skills?

**We Want  
YOU!**

...love Film, Comedy, Theatre?  
...have a few hours spare?

The Plough relies on the support  
of its volunteers.

If you love the arts, want to learn  
new things or have skills to offer,  
and have a few hours a week to  
spare please drop us a line!

Roles include stewarding, publicity,  
photography, copy-writing, technical,  
café & bar, events and general  
administration.

**A great way to start a career in the Arts!!**

To find out more, email us: [volunteers@theloughartscentre.org.uk](mailto:volunteers@theloughartscentre.org.uk)

## The Plough Poetry Prize 2024

The Plough Prize 2024 is a 40 line  
Open Poetry Competition with cash  
prizes of £1,750.

the plough  
**2024  
Poetry  
Prize**

We received over 2,000 entries for the 2023  
competition. The entry fee is £5 per poem  
(£6 for postal entries). Entries are welcome now.  
The name of the 2024 judge is to be announced.  
Closing date: 31 March 2024.

Details at the box office or via [www.theloughprize.co.uk](http://www.theloughprize.co.uk)



## OPEN AIR THEATRE

### ALICE'S ADVENTURES IN WONDERLAND

#### The Pantaloons ALICE'S ADVENTURES IN WONDERLAND

**Fri 1 Sept 3pm**

at RHS Garden Rosemoor

**£13 / £11 / £10** (+ drama workshop.  
6-11yrs. 1pm – 2.30pm. £5)



LIVE COMEDY

#### JOHN KEARNS: THE VARNISHING DAYS

**Fri 1 Sept 8pm**

A heart-stopping, wig-shaking, knee-knocking, digressing new show from stand up comedian to the stars.

**£16.50**

## OPEN AIR THEATRE

### ROBIN HOOD

adapted by Oliver Grey

#### Illyria ROBIN HOOD

**Sat 2 Sept 5pm**

at **Blackberry Farm**, Milton Damers

**£13 / £11 / £10** (+ drama workshop.  
6-11yrs. 3pm – 4.30pm. £5)

## OPEN AIR THEATRE



#### IK Productions HERCULES

**Sat 2 Sept 5pm**

at **Castle Hill Filleigh**, S.Molton

**£13 / £11 / £10**



LIVE DANCE / MUSIC

#### MI FLAMENCO 'ECHOES'

**Sat 2 September 8pm**

Mi Flamenco are back by popular demand with their evocative multi-media production, Echoes. Everything we experience leaves an indelible imprint... A trace... An echo. Blending reflections of Spain with the power and poise of flamenco – Echoes takes the audience on a journey to the innermost curiosities and beauty of Andalusian culture.

**£19 / £17 Supporters**

#### ROSEANNA BALL

**Sat 9 Sept 8pm**

Multi-Instrumentalist, Singer-Songwriter Roseanna Ball is a keen performer, having supported the likes of Phil Beer, Kathryn Roberts and Sean Lakeman.

**£12 / £10 Supporters**

#### PYT: THE SUMMER SHOW!

**Thurs 14 Sept 7pm**

Talented young performers present a musical adventure in a dystopian land, where stories are told, names are lost and found, and courage and friendship prevail. An original piece of theatre for all ages combining song, dance, drama, puppetry and more! Not to be missed!  
**£6 / £4 Supporters & Under 18s**



#### THE PLOUGH OPEN MIC NIGHT Thurs 14 Sept 8pm – 9.30pm in The Gallery

Now in its 11th year! An informal space to share or perform poems, rap, or acoustic songs of your own, or that you admire. The monthly sessions (2nd Thurs of every month) offer a friendly space to air your creations or share your passions. All welcome. For more info please contact [tonywade4@btinternet.com](mailto:tonywade4@btinternet.com) or call 07708 111991.

**£4 Waged £2 Unwaged** (Suggested Donations)



A GALLERY GIG



LIVE THEATRE



LIVE TRIBUTE ACT

#### BEATLES COMPLETE

**Fri 15 Sept 8pm**

A night of Beatlemania packed with massive hits from the most influential band of all time. This Liverpool based 'beat combo' were the youngest ever Beatles band to gain a residency at the Cavern Club in Liverpool where they still perform every Saturday, packing the club out and creating a unique Beatles vibe. All four members are accomplished multi-instrumentalists allowing them to span right across The Beatles' recording history.

**£18 / £15 Supporters**



LIVE MUSIC

### **DAPHNE'S FLIGHT**

**Mon 18 Sept 8pm**

An exceptional force in British music. Chris While, Helen Watson, Julie Matthews, Melanie Harrold and Miranda Sykes are among the UK's most-loved and respected artists individually, but when they join forces on stage something magical happens.

**£21 / £19 Supporters**



LIVE MUSIC @StANNE'S

### **NEX'T'NOTHIN'**

**Thurs 21 Sept 8pm at**

**ThePlough@StAnne's, Barnstaple**  
Nex't'Nothin' have been writing acoustic and the occasional electric song for over 30 years. The duo has now added Chris on vocals and Djembe drum to fill out the sound of acoustic guitar, bass, mandola, keyboard and whistles. Expect songs in a range of songs and styles from folk, through rock, to jazzy influences.

**£10 / £8 Supporters**



LIVE COMEDY

### **SIMON EVANS 'HAVE WE MET'**

**Thurs 21 Sept 8pm**

After finally solving the mystery of his existence and true identity in *Work of the Devil*, Simon finds that he has still not overcome the more daily challenges of remembering what he came upstairs for, who these grown-ups are that live with him (and what they have done with his children?)

**£19**



LIVE THEATRE

### **MIDDLEWEIGHT THEATRE:**

**AMENDMENTS: A Play On Words**

**Fri 22 Sept 8pm**

Has 'political correctness' gone mad? Is censorship overshadowing common sense? Or is it vital to protect vulnerable people against prejudice? 'Amendments: A Play On Words' is a political comedy drama that packs a punch, delivering controversial debate, dazzling word play and perfect comic timing. (16yrs+. Strong language used throughout.) **£14 / £12 Supporters**



LIVE MUSIC @StANNE'S

### **CHARLIE DORE (DUO WITH JULIAN LITTMAN)**

**Fri 22 Sept 8pm at ThePlough@ StAnne's, Barnstaple**

Charlie's songs have been recorded by George Harrison, Tina Turner and Celine Dion, but she keeps the best songs for herself, as she tours with long-time collaborator, the multi instrumental singer/writer/actor Julian Littman (Steeleye Span), 'my other brother'. **£12 / £10 Supporters**



LIVE MUSIC @RESURGENCE

### **NICK WYKE & BECKI DRISCOLL**

**Fri 23 Sept 8pm at ThePlough@ Resurgence, Hartland.**

We are delighted to launch our new programme of events in Hartland, in collaboration with Resurgence, via popular local folk duo Nick Wyke & Becki Driscoll with their innovative blend of bewitching melodies, driving fiddle chords and powerful vocals. 'folk music at its best' The Living Tradition. **£12 / 10 Supporters**



A GALLERY GIG

### **JACOB & DRINKWATER**

**Wed 27 Sept 8pm**

Jacob's vocals never fail to captivate, delivering many a spine-tingling moment; the fluidity and precision of his finger-picking underpinned by Drinkwater's nimbly rhythmic double bass. "stand out new folk" BBC6 Music **£12 / £10 Supporters**



LIVE THEATRE

### **WHAT NOW PRODUCTIONS: COME OUT FIGHTING'**

by Nick Bamford

**Thurs 28 & Fri 29 Sept 8pm**

A love story inspired by Merimée's *Carmen*, 'Come Out Fighting' explores male sexuality and its testosterone-driven links with aggression and violence. Two squaddies, both damaged by abuse, are pitched into a sado-masochistic affair, fuelled by jealousy, ..where fighting and sex become indistinguishable. *Not Suitable for Children* **£12 / £10 Supporters**

SEPTEMBER

01805 624624 / [www.theploughartscentre.org.uk](http://www.theploughartscentre.org.uk)  
A £5 FEE WILL BE APPLIED TO ALL BOOKINGS

## LIVE COMEDY @LYNTON



### JO CAULFIELD

**Sat 30 Sept 7.30pm**

**at ThePlough@LyntonTownHall**  
Voted Comedians' Comedian of The Year 2021/2022, Jo is quite simply one of the most consistently funny and creative comics in the country. Hot on the heels of her sell-out Edinburgh Fringe run, Here Comes Trouble is packed with brilliant routines and fantastically embarrassing stories.  
**£20 / £18 Supporters**

## LIVE COMEDY @THEPLOUGH



### THE COMEDY STORE

**Sat 30 Sept 8pm**

The Plough Arts Centre is one of only nine UK venues to be chosen by The Comedy Store, London to deliver these special comedy nights. Book early.....

*'Still the greatest and most influential comedy club on the planet.'* Time Out  
**£16.50 / £14.25pp**  
**(Groups of 4+)**

## LIVE THEATRE

**TBC Productions presents IN OTHER WORDS by Matthew Seager**  
**Wed 4 Oct 8pm**



They call it 'the incident' now. What happened when they first met. He always said it was part of his 'romantic plan', but they both know that's rubbish. Connected by the music of Frank Sinatra, this intimate, humorous and deeply moving love story explores the effects of Alzheimer's disease and the transformative power of music to help us remember the past, connect with the present and hope for the future. Age Advisory: 12yrs+  
*"A heart shattering production...a stunning showcase of love, compassion and intimacy"\*\*\*\*\*Reviews Hub*  
**£15 / £13 Supporters / Senior Citiz / £10 School Groups**

## LIVE MUSIC



### HAMILTON LOOMIS

**Fri 6 Oct 8pm**

Hamilton Loomis is described as 'a non-stop turbo of power'. At 17, he played the world-famous Delta Blues Festival to 40,000 people. Enjoy funky rhythms, booming horns, powerful yet refined harmonica, soulful vocals and stellar guitar work. Loomis is at the forefront of bringing blues based American music into the 21st century.  
**£18 / £15 Supporters**  
**+ Pre-show meal served in the theatre from 6pm. Two courses for £20**

## A GALLERY GIG



### RICH MALFAIT AND FRIENDS

**Sat 7 Oct 8pm.** An evening with Rich Malfait with Ania on flute and Ant on bass. Rich writes story songs, usually in the amber glow of a Jamesons, about artists, muses, lifeboats, kites, black dogs, benches, treasure, old Victorians and lorries...  
**£10 / £8 Supporters**

## LIVE THEATRE



### Living Room Theatre THE WASHING MACHINE OF DESTINY

**Thurs 12 Oct 7.30pm**

*(Duration 80 mins, no interval)*  
Luca Saunders is still a teenager, Philip Robinson is getting on a bit. Both are on the autistic spectrum. This theatre show is a conglomeration of their bonkers ideas, perhaps like nothing you will have seen before. An eclectic mixture of music, characters, story and conversation in a show that they have created together. Come for a spin!  
**£10 / £5 Supporters & Under 18s**  
**+ Workshop: 2pm - 4pm Sun 8 Oct**  
inclusive & free for anyone (particularly those who are on the autistic spectrum, those living with disabilities and young people) to come and make stories/theatre/music out of their life experiences. **£Free**



**THE PLOUGH OPEN MIC NIGHT**  
**Thurs 12 Oct 8pm – 9.30pm in**  
**The Gallery** (For details see entry re  
 14 Sept) **£4 Waged £2 Unwaged**  
**(Suggested Donations)**

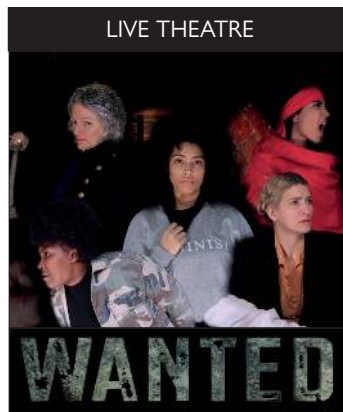


**GARY MCCAUSLAND: LENNON**  
**– LYRICS AND MUSIC**

**Fri 13 Oct 8pm.** A deep dive  
 into the music and lyrics of John  
 Lennon. Fresh from an outstanding  
 performance at the Bude Literary  
 Festival, this promises to be an  
 illuminating evening of all things  
 Lennon. **£12 / £10 Supporters**



**SWYMBRIDGE CONSORT**  
**Sat 14 Oct 7.30pm at**  
**ThePlough@StAnne's, Barnstaple**  
 Four members of acclaimed North  
 Devon choir, Vocal Accord, return  
 with a new programme. A journey  
 around Britain & Ireland to experience  
 their beautiful choral heritage.  
 Renaissance masterpieces, passionate  
 folksong and modern gems.  
**£8.** Proceeds to Over and Above, North  
 Devon District Hospital Charity



**Gazebo Theatre 'WANTED'**

**Wed 18 Oct 8pm**  
**& Thurs 19 Oct 10.30am**

Through powerful storytelling,  
 spoken word, movement and music  
 'WANTED' explores the stories of  
 5 extraordinary ordinary women  
 who share a passion for standing up  
 for what is right! They include Irena

Sendler, who rescued more than  
 2,500 children from the Warsaw  
 ghetto during the Nazi occupation;  
 Olive Morris, British Black Panther  
 and avid activist for women and  
 squatters' rights; Phoolan Devi, the  
 fearsome Bandit Queen, and a woman  
 way ahead of her time, Dr James  
 Barry. All played out in Gazebo's  
 inimitable style; powerful drama  
 littered with humour, honesty and  
 heart. For 43 years Gazebo Theatre  
 has been delivering a comprehensive  
 range of high quality and innovative  
 theatre productions. It has a  
 reputation for telling the stories of  
 historical figures in an innovative,  
 unique and thoroughly engaging way.  
 This powerful play is presented as  
 part of Black History Month.

Age Advisory: 11yrs+  
**£12 / £10 Supporters / £8**  
**Schools + Workshop for schools**  
**1.30pm – 3pm. Ring for details.**



**CROW IN THE KITCHEN**  
**Wed 18 Oct 8pm at ThePlough@**  
**StAnne's, Barnstaple**  
 Rooted in the Blues the Back Kitchen  
 Boys are joined by established vocalist  
 Liz Crow to add some Bessie Smith  
 and Lucille Bogan to the mix! Always  
 entertaining - sometimes thought  
 provoking - it's harmonica wailing,  
 bass stomping, guitar picking, Cahon  
 tapping music and banter at its best.  
**£8**

**A GALLERY EVENT**



**TWO RIVERS: SIMON**  
**MILLWARD**

**Thurs 19 Oct 8pm**

A reading by north Devon based  
 poet Simon Millward. The confluence  
 of two rivers near where he lives  
 becomes an apt metaphor for his  
 exploration of the natural world and  
 of the ties and bonds of friendship  
 and family in his new collection of  
 poems which 'over and again turn  
 the familiar and largely rural into the  
 strange and wonderful' (Kevin Crossley-  
 Holland). He will be joined by the  
 singer songwriter Tony Wade, known  
 to many as Loveworthy and for our  
 Open Mic nights. **£4**

**LIVE MUSIC @RESURGENCE**

**GARY MCCAUSLAND: LENNON**  
**– LYRICS AND MUSIC**  
**Sat 21 Oct 8pm at ThePlough@**  
**Resurgence, Hartland**

Singer/songwriter Gary McCausland  
 presents a deep dive into the music  
 and lyrics of John Lennon, guitar and  
 songbook at the ready. For more details  
 see the Plough's 13 October listing on  
 this page..  
**£12 / £10 Supporters**



## PLOUGH FUTURE TALENT!

**Wed 25 Oct 7pm – 9.30pm**

Open Mic Night for under 18s as young people from across North Devon share the stage and their skills in music, theatre, comedy, poetry and lots more. Young performers are welcome to take part. Email [ploughthefuture@theploughartscentre.org.uk](mailto:ploughthefuture@theploughartscentre.org.uk)

**£5 all tickets**

## LIVE THEATRE



## STORIES IN THE DUST

By Anna Harriott and Iona Johnson  
**Thurs 26 Oct 11am and 2pm**

Two travellers journey across a barren and dusty world. With live music, puppetry and clowning, 'Stories In The Dust' is a heartfelt, funny, post-apocalyptic family show that takes you to another world. A world where an ancient book guides your way, a drop of rain changes everything and a mighty lion holds its secrets in an old clay pot. Join two intrepid explorers who are full of stories and full of hope but dangerously low on baked beans.

Age Advisory: 5yrs+

**£9 / £7 (per person for Families)**

## LIVE TALENT!



## LIVE @StANNE'S



## Raventales present DAUNTLESS DEVONIANS

**Fri 27 Oct 7.30pm at ThePlough@ StAnne's, Barnstaple**

The stories Michael tells in this programme are all quite true - but they're so strange they sound just like folk-tales. Some are attested as historical fact, while others are within living memory, for he collected them orally in the Okehampton area forty years ago. The tales are accompanied by Wendy singing 'folk-songs' and hymns, mostly written or collected by the Revd. Baring-Gould and one is illustrated by a 'Crankie', a moving picture-scroll.

Age recommendation 12+

**Tickets: £10 / £8 Supporters**

## FILM & DJ NIGHT



## ROCKY HORROR PICTURE SHOW

**Fri 27 Oct 7.30pm – 11.30pm**

A special screening of the classic film. Plus 1970s DJ Dance Night in the café after the film. Prizes for best outfit!

**Film: £7.50 / £6.50 Supporters / £5**

**Torridge Deal + DJ Night: £2.50**

## LIVE THEATRE @StANNE'S



## HAUNTINGS – performed by Gerard Logan

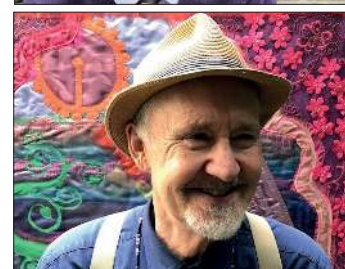
**Mon 30 Oct 6.30pm & 9pm at ThePlough@StAnne's, Barnstaple**

Hauntings is an evening of three tales of the supernatural from two of the world's greatest writers of ghost stories, E.F. Benson and M.R. James. With masterful storytelling from the award-winning actor Gerard Logan, Hauntings will transport you to a darker, more sinister world of the unexpected and the unexplainable.

Age Advisory: 11yrs+

**Tickets: £12 / £10 Supporters**

## LIVE COMEDY



## Edge Street Live presents HENRY NORMAL & NIGEL PLANER

**Tues 31 Oct 8pm**

Nigel Planer is a comedy legend, an actor, writer and more importantly for this show he's a great poet. He joins Henry Normal, BBC Radio 4's 'poet in reticence' to reunite a team that entertains, educates and informs (but mostly entertains it must be said). Expect poetry, stories, jokes, Q & A, fun, knitwear and a few surprises. Henry Normal co-wrote the multi-award winning Mrs Merton show and the first series of The Royle Family. Nigel Planer starred in the seminal TV series The Young Ones, and The Comic Strip Presents. **£18.50**

## LIVE THEATRE



### Multi Story Theatre present LAST DANCE SALOON

**Thurs 2 Nov 2pm and 8pm**

A new play from North Devon's Multi Story theatre company. In the past, Multi Story have premiered their plays at festivals in Canada and Prague. That no longer feels sustainable

– despite the invaluable, life-changing experiences. Their new production plays with that dilemma. Two people with tangled pasts find each other at a dance retreat in Buenos Aires. A spark is lit – their passion burns bright – this was meant to be. But one has work and family ties in South America; the other in North Devon. They settle into a long-distance relationship fuelled by regular tango sessions in Argentina. Until one of them weighs the ecological impact. What to do? A multi story mix of music, song, dance, physical theatre and stories ancient and modern.  
*Age Advisory; 14yrs+*  
**£12 / £10 Supporters, Under 18s, Senior Citizens & unwaged**

## LIVE MUSIC @StANNE'S



### SARAH MCQUAID

**Sat 4 Nov 8pm at ThePlough@ StAnne's, Barnstaple**

Sarah McQuaid's lush, chocolatey voice combines with her engaging personality, "subtle mastery onstage" (Huffington Post) and "brilliant musicianship" (fRoots) on acoustic and electric guitars, piano and (occasionally) drum to create a truly immersive experience.

**Tickets: £15 / £13 Supporters**

### MARTIN ROWSON - GIVING THE GIFT OF OFFENCE

**Wed 8 Nov 8pm**

Martin Rowson is a multi-award-winning political cartoonist, author, ranter, illustrator, broadcaster and poet who's been assailing the world of politics with his foul images for 40 years. He takes us through 40 years of British Politics, with personal and cartoon responses to the individuals he has met: including the perennial challenges of having to work out how to draw the "fresh meat" of each new Prime Minister, alongside the events we've all witnessed and he's depicted. Refreshingly indiscreet in revealing the people beneath the pomp and spin (as well as spilling the beans on the true nature of journalism), this show will be fully illustrated.

## LIVE MUSIC



### MARTYN JOSEPH

**Thurs 9 Nov 8pm**

Martyn Joseph has a magical ability to reach out to his listeners through his passion and humour. Stunning reviews single him out as an unmissable solo performer whose music stays with you long after the show has ended. Be it to two hundred people or twenty thousand, he blows the crowd away night after night. (Tickets are flying already – book soon!). "Stunning, heartfelt music" Bob Harris BBC Radio 2  
**£21.50 / £19.50 Supporters**

## LIVE EVENT



Age Guidance: 14+

**£16 / £13 Supporters / £10 School Groups (14yrs+)**

## THE PLOUGH OPEN MIC NIGHT

**Thurs 9 Nov 8pm – 9.30pm in The Gallery** (For details see entry re 14 Sept) **£4 Waged £2 Unwaged (Suggested Donations)**

## LIVE SHOW



### BEN GARROD'S ULTIMATE DINOSAUR SHOW

**Fri 10 Nov 1pm and 7pm**

Get ready to go on an exciting pre-historic adventure as Ben talks you through the deadliest predators that ever roamed the planet.

**£16 / £14 Supporters & Under 18s / £10 Schools**

## LIVE MUSIC @RESURGENCE

### ROSA REBECCA

**Fri 10 Nov 8pm at ThePlough@ Resurgence**

Drawing on the strands of her mixed heritage and the traditions of her adopted land, Devon-based Swedish singer/songwriter Rosa Rebecca weaves together an evening of songs and stories of love and hope from the different cultures that intertwine to form the background to her own musical landscape.

**£12 / £10 Supporters**

NOVEMBER

01805 624624 / [www.theploughartscentre.org.uk](http://www.theploughartscentre.org.uk)  
A \$5 FEE WILL BE APPLIED TO ALL BOOKINGS

## the plough

YOUTH THEATRE

**Plough Youth Theatre Seniors + Juniors (Script in Progress Show)****Thurs 16 & Fri 17 Nov 7pm**

New writing short performances by both PYT groups. The senior groups will present scenes from 'A tale of Two Sisters' and 'The Best Life' which are new scripts written by new writers linked to the Plough Youth Theatre. **£5**

## LIVE MUSIC

**JOHNNY & JUNE TRIBUTE with Ian Holleran and Roseanna Ball****Sat 18 Nov 8pm**

Multi-instrumentalists Roseanna Ball and Ian Holleran return to The Plough with their unique tribute to Johnny & June Carter Cash. With Ian on the bones, cajon, bodhran and guitar you can expect the unexpected with this heart-felt tribute. **£12 / £10**

**THE A.G.M OF THE PLOUGH ARTS CENTRE**

**Wed 22 Nov 6pm** in The Gallery  
All are welcome at this short meeting to hear about the highs and lows of another exciting year in the life of The Plough. It will include a Q&A with trustees and staff. (Stay on to see the stunning Voloz Theatre at 8pm.) **£Free**

## LIVE THEATRE

**Voloz Theatre THE MAN WHO THOUGHT HE KNEW TOO MUCH****Wed 22 Nov 1pm & 8pm**

(65 mins duration)

2022's sold-out hit returns to The Plough – bigger and better. Don't miss it! Wes Anderson meets Hitchcock meets Spaghetti Western in this multi-award-winning, fast-paced, raucous whodunnit. Lecoq-trained Voloz Collective delight and stun with live music and virtuosic acrobatics.

**£13.50 / £11.50 Supporters / £8 Schools (8yrs+)**

**(+ workshops for schools on Thurs 23 Nov – contact us for details)**

## A GALLERY PERFORMANCE

**PLOUGH STORYTELLING CIRCLE: TALES FOR AN AUTUMN EVENING.****Thurs 23 Nov 8pm**

Stories from around the world to inspire, intrigue and delight you, as skilled members of our storytelling circle, based at ThePlough@StAnne's, make a welcome return to The Plough for a special evening of tall tales and short stories in the cauldron of the Gallery. **£8 / £6 Supporters**

## LIVE COMEDY

**THE COMEDY STORE****Sat 25 Nov 8pm**

The Plough Arts Centre is one of only nine UK venues to be chosen by The Comedy Store, London to deliver these special comedy nights. Book early....

*'Still the greatest and most influential comedy club on the planet.'* Time Out

**£16.50 / £14.25pp (Groups of 4+)**

## LIVE DANCE

**INSPIRE! A COMMUNITY DANCE CELEBRATION****Fri 24 Nov 7pm**

Back by popular demand after a sell-out success in June: Dance companies and individuals of all ages and abilities share their passion for dance. Book early to avoid disappointment  
**£7 Adult / £5 Supporters & Under 18s**



Photo by Eugenia Maxenova on Unsplash



LIVE THEATRE



**Quirk Theatre:  
FIVE CHILDREN AND IT**

**Wed 29 Nov, Thurs 30 Nov, Fri 1 Dec: 10.30am & 1pm + Sat 2 Dec 2pm** (75 mins duration)

Quirk Theatre return with a heartwarming and hilarious festive adventure all about wishes. Wishes that are granted by an anarchic fairy-monster-thingy with eyes on stalks. The lucky children who find the Psammead can wish for anything! But they might need to be careful what they wish for... This Christmas, join the Psammead and five children for a fresh,

festive take on E. Nesbit's beloved children's book. Quirk are known for their inventive and innovative approach, wowing audiences with their use of projection, puppetry, creative set design and original music. Quirk deliver an exciting, engaging and magical experience for all.

*'Quirk Theatre know perfectly how to create that magical blend of unmissable fun, laughter and audience participation'*  
Express & Echo

**£10 / £8 Supporters/Families/  
School Groups (every 11th ticket  
free for groups)**



**YOUNG MAKERS**

**Sun 3 Dec 1pm – 5pm**

Celebrate the creativity of North Devon's Young Makers and bag some high quality Christmas gifts with a personal touch. Tea, cakes and live music will add to a very special

afternoon in the foyer. If you are under 18 and want to sell your homemade products please contact us. (Original Gifts created by adults will also be available up in the Gallery.)

**£Free**

LIVE MUSIC



**VOODOO ROOM**

**Fri 8 Dec 8pm**

Celebrating the incredible music of Jimi Hendrix, Eric Clapton & Cream - Voodoo Room are a stunning high energy 'Power Trio' featuring some of the U.K.'s finest musicians.

**£16 / £13**

**the plough**  
**YOUTH THEATRE**

**PYT Christmas Extravaganza!**

**Sat 9 Dec 7pm – 9pm**

A family friendly evening of festive fun and Christmas performance! Come along and enjoy music, dance, drama and comedy from the talented PYT performers and get into the Christmas spirit! **£5**

**THE PLOUGH OPEN MIC**

**NIGHT** (venue in Torrington TBC)

**Thurs 14 Dec 8pm – 9.30pm**

(For details see entry re 14 Sept)

**£4 Waged £2 Unwaged**

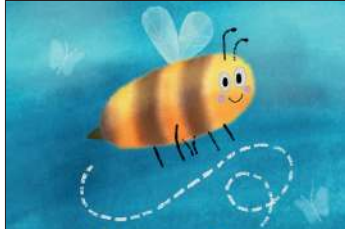
**(Suggested Donations)**

DECEMBER

01805 624624 / [www.theploughartscentre.org.uk](http://www.theploughartscentre.org.uk)  
A 5% FEE WILL BE APPLIED TO ALL BOOKINGS



## LIVE THEATRE


**Above Bounds Theatre:  
BRILLIANT BEE for 4-8yrs**
**Thurs 14 Dec at 1pm**  
**Fri 15 Dec 10.30am and 1pm**

A playful new show that will leave little ones buzzing! Far above the sea, on

the winding path above, buzzes a little orange bee who is feeling very hungry! As the seasons change and the walkers pass by, will anyone notice our bee? Put on your walking boots and join Above Bounds for Brilliant Bee. Our story emerges from a picnic basket and explores some of the rare insects you can find on the Devon Coast. Expect a heartwarming show full of fun, plenty of puppets and lots of giggles! This is the perfect introduction to theatre ages 4-8. Above Bounds are a children's theatre company based in Plymouth, Devon, making exciting shows for children under 11 & their families, telling stories in fun, playful and visually innovative ways. **£6**

## LIVE MUSIC


**AN AUDIENCE WITH  
TEACHER'S ROCK**
**Sat 16 Dec 7.30pm**

Join Teachers Rock® founder and musical director Debbie Kent and accompanist John Bangham as they bring the nationally acclaimed choir back to their hometown for a festive night to remember....

**£12 / £10 Supporters**

## LIVE MUSIC

**THE OGGLE BAND CEILIDH**
**Sat 6 Jan 8pm**

The 'Oggle Band' are one of the liveliest, most entertaining ceilidh dance bands in the South West. Featuring fiddle, melodeon, banjo, guitar, whistle & drums, the six-piece, multi-instrumental line up creates sound that won't let you keep still!

**£12 / £10 Supporter / £8 Key Worker**
**THE PLOUGH OPEN MIC  
NIGHT (in the Gallery)**
**Thurs 11 Jan 8pm – 9.30pm**

(venue in Torrington TBC)  
(For details see entry re 14 Sept)

**£4 Waged £2 Unwaged  
(Suggested Donations)**
**Bob Harris & Colin Hall present  
'THE SONGS THE BEATLES  
GAVE AWAY'**
**Fri 12 Jan 8pm**

The BBC's Bob Harris and author/music journalist Colin Hall share a mutual love and appreciation of The Beatles. This intimate event includes rare archive audio from Bob Harris' Old Grey Whistle Test meeting with John Lennon. By 1963 Lennon and McCartney had written so many songs they couldn't all be accommodated on their own releases, so it made good sense to offer them to other artists

## A GALLERY GIG

**LOVEWORTHY: SONGS FROM  
AN UNEXPLODED PAST**

## WORKSHOP / PERFORMANCE

**WASSAILING WORKSHOP  
WITH ROSA REBECCA**
**Sun 14 Jan 2-4pm**

Join acclaimed singer and vocal coach Rosa Rebecca to learn about Devon's wassailing traditions and sing wassail songs old and new among the apple trees at Collingham's Orchard on Torrington Commons. **£12 / £10**

**WASSAIL PERFORMANCE  
WITH ROSA REBECCA**
**Sun 14 Jan 4.37pm at  
Collingham's Orchard at  
Torrington Commons**

As the sun sets, come and celebrate the magic of apples (and cider!) in this age-old Devon tradition of singing & merry-making. All ages welcome.

**£3. (£Free for workshop participants)**

## LIVE TALK



such as Cilla Black, Billy J. Kramer and Tommy Quickly. This is the story behind those songs, the hits, the misses and the demos they never released. *Bob Harris is a straight-up legend* Chris Martin / Coldplay **£21.50**

**Sat 13 Jan 8pm**

For details see Sat 27 Jan event p11.

**£8 (Proceeds to The Samaritans  
– Barnstaple Branch)**

## LIVE MUSIC @StANNE'S

**GORDIE TENTREES & JAXON  
HALDANE**
**Wed 17 Jan 7.30pm at**

**ThePlough@StAnne's, Barnstaple**  
International award winning Canadians Gordie Tentrees & Jaxon Haldane have performed 950 concerts together. Armed with 10 instruments (banjo, mando, cigar box guitars, fiddle- saw, harmonica, resonator, acoustic, porch bass, snare) brotherly harmonies & masterful storytelling a special night awaits those who book early.

*'Organic & holistic folk, this is the wild sound of freedom and the freedom to fly'*  
Midwest Record, USA **£12/10**

## Torrington Community Panto: TROUBLE IN PANTOLAND

**Thurs 18 – Sat 20 Jan 7.30pm.**

**Matinee 2pm Sat 20 Jan**

Torrington Players and The Plough have brought local people of all ages together to raise the roof with laughter in this witty and clever amalgamation of all the panto classics, as they seek to resolve 'Trouble in Pantoland'. But will they succeed.....?

*The panto, though a little late*

*You will agree is worth the wait!*

*With panto people on the loose*

*A comic Dame and a giant goose*

*We need you there to cheer us on*

*And join us in the final song.*

*So come along and give a hand*

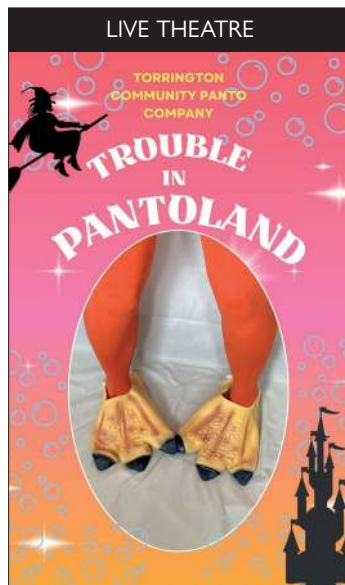
*To sort the 'Trouble in Pantoland'*

*With heroes, villains, songs and rhyme*

*Let's shout 'Hooray it's panto time!'*

**£11 / £10 Senior Citiz £9**

**Supporters + Under 18s Groups  
of 4 (per person)**



## NTLive. Thurs 25 Jan 7pm

Play title still tbc at time of printing.

Please see our website for details

**£15 / £12**

## LIVE MUSIC @RESURGENCE



## LOVEWORTHY: SONGS FROM AN UNEXPLODED PAST

**Sat 27 Jan 8pm**

**at ThePlough@Resurgence,  
Hartland**

One of our most prolific and eclectic songwriters shines his idiosyncratic light on both timeless and contemporary themes with passion, intensity and humour. Bringing his fine guitar skills in varied styles to perfectly match this new set of original, thought-provoking songs.

**£8 (Proceeds to The Samaritans  
– Barnstaple Branch)**

## THE COMEDY STORE

**Sat 27 Jan 8pm**

The Plough Arts Centre is one of only nine UK venues to be chosen by The Comedy Store, London to deliver these special comedy nights. Book early.....

*'Still the greatest and most influential  
comedy club on the planet.'* Time Out

**£16.50 / £14.25pp (Groups of 4+)**



## FIFI LA MER & OLIVER WILBY

"Let us take you to Paris" Live French music and more.

**Sat 3 Feb 8pm**

Parisian Chanteuse and accordionist  
Fifi La Mer will be joined by her

collaborator Oliver Wilby on the tenor saxophone, clarinet and piano accordion for their exiting live performance including works from Edith Piaf, Charles Trennet, Django Reinhardt and Serge Gainsbourg. Brace yourself for an exciting and charismatic performance Fifi and Oliver have been touring the country with their unique show, including a sell-out show at Ronnie Scott's. Oliver regularly performs with the Pasadena Roof Orchestra, Syd Lawrence Orchestra and the BBC Big Band.

**£16.50 / £15 Supporters £13**

**Under 18s +Pre-show meal**

**served in the theatre from 6pm.**

**Two courses for £20**



## RICH MALFAIT AND FRIENDS

**Sat 3 Feb 8pm at ThePlough@  
StAnne's, Barnstaple**

An evening with Rich Malfait, Ania on flute and Ant on bass. Rich writes story songs about artists, muses, lifeboats, kites, black dogs, benches, treasure, old Victorians and lorries..."Hauntingly enigmatic"

**£10 / £8**

JAN / FEB

01805 624624 / [www.theploughartscentre.org.uk](http://www.theploughartscentre.org.uk)  
A 5% FEE WILL BE APPLIED TO ALL BOOKINGS

11



### LIVE MUSIC

## TONY MOORE presents AWAKE

**Thurs 8 Feb 8pm**

An original member of Iron Maiden, Tony Moore is a multi instrumentalist & singer/songwriter, who played piano with Meatloaf, joined Cutting Crew as keyboard player in the late 80's and toured the world with the iconic hit song "I Just Died (In Your Arms)". His powerful one man show "AWAKE" combines incredible graphics, immersive video and unforgettable songs, in an experience that leaves audiences stunned and moved. Tony's show channels the inventive and imaginative stagecraft of many of the greatest bands of the last 4 decades whilst bringing something fresh and deeply personal to every performance. **£15 / £12**

### THE PLOUGH OPEN MIC NIGHT (in the Gallery)

**Thurs 8 Feb 8pm – 9.30pm**  
in The Gallery  
(For details see entry re 14 Sept)  
**£4 Waged £2 Unwaged**  
(Suggested Donations)



### LIVE MUSIC

## BATTLE OF THE BANDS

Musicians go amp-to-amp via covers and originals to win recording time at On-Track Audio, Barnstaple and a cash prize. Six groups will include 3 x solos/duos and 3 x bands

**Under 18s only:**

**Fri 9 Feb 7pm – 10pm**

**£6 / £4 Supporters Under 18s**

**Over 18s only:**

**Sat 10 Feb 8pm – 11pm**

**£7 / £5 Supporters Under 18s**

### CHRIS DIFFORD

**Wed 14 Feb 8pm**

"Being on tour is something I really enjoy. I will be playing songs from the Squeeze catalogue and from the solo albums I have recorded over the last 23 years. My story is told through a trip back to my council estate in South London, from my very first lyrical expression, to the dressing rooms of this show. I will be joined on stage by Melvin Duffy on his peddle steel and together we will deliver an evening of warm and I hope funny stories." **£24 / £22 +Pre-show Valentines meal served in the theatre from 6pm. Two courses for £20**

### PLOUGH THE FUTURE! 'SOLO TALENT NIGHT'

**Thurs 15 Feb 7pm – 9pm** A Gallery Gig. Young solo performers under 18yrs are welcome to take part. Email [ploughthefuture@theploughartscentre.org.uk](mailto:ploughthefuture@theploughartscentre.org.uk) **All tickets £5**

### 'A MULTI STORY LIFE' with Gill Nathanson + Bill Buffery of Multi Story Theatre

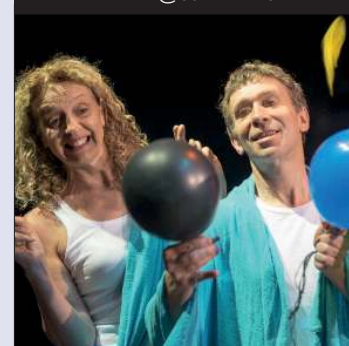
**Thurs 15 Feb 8pm at ThePlough@StAnne's, Barnstaple** Outrageous Stories, Theatrical Scandals, Big Reveals and full frontal nudity guaranteed. Dynamic and highly respected local theatre professionals, Bill & Gill, of Multi Story Theatre & founders of Barnstaple's Fringe TheatreFest, share backstage and onstage moments, memories and calamities from a life in theatre, ending with a Q&A. **£8 / £6 Supporters**



### LIVE MUSIC



### TALK @StANNE's



## FRINGE

### extra

### FRINGE-EXTRA

**Fri 16 – Sun 18 Feb at ThePlough@StAnne's, Barnstaple**  
A three-day feast of comedy, drama, spoken word, music, poetry and more...with a selection of productions that took place during Fringe TheatreFest Barnstaple 2023. Full details on website. **£8 / £6 Supporters**



## LIVE TALK @RESURGENCE



**SATISH KUMAR – RADICAL LOVE** **Sat 17 Feb 7.30pm** at **ThePlough@Resurgence, Hartland**. To see peace in our lifetimes, we have to practice love. This is the radical message of an inspirational book of pithy advice from environmental activist Satish Kumar, which helps us find ways to love ourselves, others, and all beings on planet Earth – even those we may find unlovable. Satish has devoted his life to campaigning for ecological regeneration and social justice. He is a world-renown author and international speaker, founder of The Resurgence Trust and Editor Emeritus of Resurgence & Ecologist – which he's edited for over 40 years. **£12 / £10**

## A GALLERY GIG

### CROW IN THE KITCHEN

**Wed 21 Feb 8pm**

Rooted in the Blues the Back Kitchen Boys are joined by established vocalist Liz Crow to add some Bessie Smith and Lucille Bogan to the mix! **£10 / £8**

**NTLive. Thurs 22 Feb 7pm**  
Play title still tbc at time of printing.  
Please see our website for details  
**£15 / £12**

## THE PLOUGH & RESURGENCE



**JOSIENNE CLARKE**  
**Fri 23 Feb 8pm** at **ThePlough (Gallery Gig)**

Indie-folk singer, songwriter, guitarist and producer Josienne Clarke is often said to draw on traditional British folk inspirations, but is a thoroughly modern, multifaceted artist. She has now become one of the leading lights. Comparisons to June Tabor and Sandy Denny have been made, but not just due to her remarkable vocal and writing talent. **£15**

**JOSIENNE CLARKE** (see above)  
**Sat 24 Feb 8pm** at **ThePlough@Resurgence, Hartland** **£15**



## LIVE THEATRE



### Frozen Light: THE BAR AT THE EDGE OF TIME

**Mon 26 – Wed 28 Feb 11am and 1.30pm** (duration 60 mins)

The Bar at the Edge of Time waits only for you. Leave the hours, minutes, and seconds behind, step across the threshold and meet the bar's maestro mixologists, crooners and hosts. But a mystery lies at the heart of this place, a mystery hidden even from them. One that can only be solved when we spend our time together. A multi-sensory spectacular for audiences with profound and multiple learning disabilities. (Max 6 adults with PMLD plus carers + support staff). **£10**

## LIVE COMEDY



**Scott Bennett: GREAT SCOTT**  
**Thurs 29 Feb 8pm**

Recently described by the Evening Standard as 'Live Comedy's best kept secret' Scott Bennett has been blazing

## FUTURE EVENTS

**Fri 1 March: SHOW OF HANDS**  
at **ThePlough@LyntonTownHall**

**Sat 2 March: SHOW OF HANDS**

**Fri 8 March: EDDIE GRIPPER** at **ThePlough@StAnne's**

**Fri 15 March: PAUL FOOT (Comedy)**

**Sat 16 March: JAMES OLIVER BAND**  
at **ThePlough@StAnne's**

**Wed 20 March: 'CRACKING'**  
by **Shon Dale-Jones**

**Sat 23 March: JOHN ETHERIDGE & KIT HOLMES**

**Sat 6 April: SNAKE DAVIS**

**Thurs 11 April: DOM MARTIN**

**Sat 13 April: THE MANFREDS**

**Sun 14 April: ELIZABETH-JANE BALDRY (Harp)**

**Fri 19 April: SERIOUSLY COLLINS**

**Sat 27 April: THE COMEDY STORE**

**Wed 8 May: HENRY NORMAL & BRIAN BILSTON**

**Sat 11 May: POST OFFICE SCANDAL – THE INSIDE STORY**

**Sat 25 May: THE MELTING POT**  
(local young bands)

**Sat 1 June: NICK WYKE & BECKI DRISCOLL**

**Fri 7th June: LIVEWIRE - The AC/DC Show**

**Fri 14 June: FULL OF NOISES:**  
**JOHN PATRICK ELLIOT & PIERS LEWIN**  
at **ThePlough@StAnne's**

a trail through the stand-up circuit for the best part of a decade. He's written for many high profile acts such as Chris Ramsey & Jason Manfred, and recently recorded BBC One's Live at the Apollo. Scott is on the verge of breaking through into the big time. 'Great Material, great delivery, a very funny man' Rob Brydon **£16.50**

FEBRUARY

01805 624624 / [www.theploughartscentre.org.uk](http://www.theploughartscentre.org.uk)  
A 5% FEE WILL BE APPLIED TO ALL BOOKINGS

13



## HAUNTED HISTORY TOURS...

Haunted History Tours focus on real local stories – the salacious, the dastardly and the downright scary – a range of North Devon's gritty and grubby secrets laid bare down the back streets and dark alleys!!!

Well behaved dogs are welcome on all tours.

All start at 7.30pm

**Purple Tours starts at St Anne's and include refreshments and a chance to look at artefacts.**

**Other tours as indicated.**

*\*please note that this tour is not for young ears!*



**Barnstaple Murder & Macabre**  
Sat 28 Oct, Thurs 14 Dec,  
Fri 2 Feb  
£14.50 to include refreshments.

**Barnstaple Town, Rail & River**  
Sat 2 Dec  
£14.50 to include refreshments.

**Barnstaple Bygone Brothels \***  
Thurs 5 Oct, Fri 24 Nov  
Thurs 25 Jan, Wed 14 Feb  
£14.50 to include refreshments.

**Barnstaple Town, Park & Prison**  
Thurs 9 Nov, Thurs 8 Feb  
£14.50 to include refreshments.



**Barnstaple Town & Workhouse**  
Thurs 2 Nov, Thurs 22 Feb  
£14.50 to include refreshments.



**Barnstaple Town Centre**  
Thurs 19 Oct, Thurs 11 Jan  
£14.50 to include refreshments.



**Instow**  
Thurs 14 Sept  
Tour to start and finish  
at the Instow Signal Box, Instow,  
EX39 4JT  
£12

**Bideford Old Town.**  
Thurs 16 Nov, Fri 1 March  
Tour starts and finishes outside  
Bideford Town Hall, New Road,  
Bideford, Devon, EX39 2HR  
£12

# the plough

## YOUTH THEATRE

**THE PLOUGH YOUTH THEATRE** provides exciting opportunities for drama, theatre and performance for 2-18 year olds. Come along to our fun and friendly weekly workshops to learn performance skills, be part of something special, and create your own magic on stage!

### PYT SATURDAYS:

**INFANTS 5-7yrs**  
10.45am-12.15pm  
**£40 / £30 Supporters** (per term)

**THEATRE TOTS 2-4yrs**  
12.30pm-1.15pm  
**£40 / £30 Supporters** (per term)

**JUNIORS 8-11yrs**  
1pm-3pm  
**£75 / £60 Supporters** (per term)

**SENIORS 11-14yrs**  
10.15am-12.15pm  
**£75 / £60 Supporters** (per term)

**SENIORS 14-18yrs**  
10.15am-12.15pm  
**£75 / £60 Supporters** (per term)

**Term times:**  
9th Sept - 9th Dec  
(excl 28th Oct)  
13th Jan - 30th Mar  
(excl 17th Feb)



### CREATIVE SCRIPT WRITING for 8-18 years

Fun and engaging weekly workshops where young writers can learn more about scriptwriting; developing characters and stories, and have a go at crafting their own script, with opportunities for their scripts to be performed.  
**£40 / £30 per term**

**Thursdays 4.30-5.30pm**  
**14th September - 7th December**  
(Excl 26th October)  
**18th January - 28th March**  
(Excl 15th February)

plough  
the future

Plough Youth Theatre is supported by The Achates-Gard Fund

### CREATIVE DANCE AND MOVEMENT

These popular classes give young people the opportunity to express themselves, tell stories and learn performance skills through a variety of dance styles and genres. Relaxed and fun, with exciting performance opportunities.

**CREATIVE DANCE**  
**Sat 3-5pm (8-16 yr olds)**  
**£75 / £60 Supporters** (per term)

**CREATIVE MOVERS**  
**Sat 1.30pm - 2.30pm (Under 8 yrs)**  
**£40 / £30 Supporters** (per term)

**Term times:**  
**9th Sept - 9th Dec** (excl 28th Oct)  
**13th Jan - 30th Mar** (excl 17th Feb)

Rambert  
grades

**Participants can choose to achieve Rambert Grades creative dance awards through these classes!**

### Are you between 10-18?

Do you have a passion for the arts? Do you have new ideas? Would you like to represent young people's voices here at The Plough? Get in touch today: richard@theploughartscentre.org.uk



Quirk Theatre facilitating a creative youth workshop

### CREATIVE OUTREACH

The Plough Creative Outreach programme offers a diverse range of creative, visual and performance art activities and workshops to the North Devon community.

We work with local schools offering special workshops, after school clubs, curriculum enrichment, and activities that support the well being of students.

We can also offer the home educating community an array of creative workshops and performance opportunities to suit individual and group requirements.

As part of our accessible and inclusive approach to the arts we are delighted to offer regular and one off workshops to children and adults with additional needs and disabilities.

Our creative outreach doesn't stop there, and we are happy to discuss any ideas you have! To book a workshop, chat about an idea, or organise an education activity, contact our Youth Theatre and Creative Outreach director, Katherine Lockett-Clark - katherine@theploughartscentre.org.uk



**TORRINGTON COMMUNITY PANTO Rehearsal**  
**Mondays 6.30pm – 9pm**



**PLOUGH PRISM**  
**10.30am – 12.30pm Tuesdays**  
**12 Sept – 5th Dec** (Excl 24 Oct)  
**9 Jan – 26 Mar** (Excl 13 Feb)

An exciting weekly drama workshop for adults with additional needs with the support of their carers.

**£4.50 per session**

**MOTION DANCE**  
**1.30pm – 2.30pm Tuesdays**  
**12 Sept – 5th Dec** (Excl 24 Oct)  
**9 Jan – 26 Mar** (Excl 13 Feb)

An enjoyable weekly dance and movement workshop for adults with additional needs with the support of their carers.

**£2.50 per session**

**LIFE DRAWING with Jenny Arran**  
(5 week course) see p17 for details  
**Tues 19 Sept – Tues 17 Oct 11am**  
**– 1pm in the Dance Studio**



**BIOFORM DANCE WORKSHOP**  
with Miranda Jankowska  
**6pm Tuesdays**  
**12 Sept – 17 Oct, 31 Oct – 19 Dec,**  
**9 Jan – 6 Feb, 20 Feb – 26 Mar**

These sessions will focus on our natural movement in and around the body. A movement lab for those who want to explore different layers of what we are made up of.

**£7 / £5 Supporters (per session)**



**PLOUGHCAPELLA Community Choir** with Alison Whittall  
**7.30pm – 9pm Tuesdays**  
**26 Sept – 5 Dec** (Excl 24 Oct)  
**9 Jan – 19 March** (Excl 13 Feb)

Come and free your voice with North Devon's thriving Community Choir. For more info call 01805 624624. www.alising.co.uk

**£80 / £70 Supporters (per term)**  
**£40 / £35 Supporters (5 weeks)**

**INTRODUCTION TO WATERCOLOURS** with John Piper  
**Wed 1 Nov – Wed 6 Dec 10:30am**  
**– 1pm (Six week course)**  
see p17 for details

**INTRODUCTION TO ACRYLICS**  
with John Piper  
**Wed 10 Jan – Wed 14 Feb**  
**10:30am – 1pm (Six week course)**  
see p17 for details

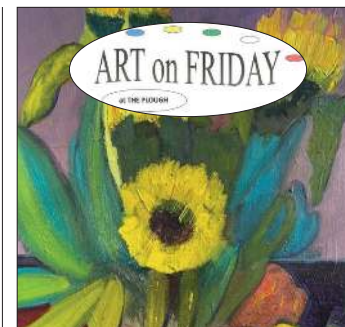
**MAKING YOUR MARK**  
with Penny Rowland-Hill  
**Thurs 14 Sept – Thurs 19 Oct**  
**10.30 am – 1.00 pm in the Gallery**  
see p17 for details



**PLOUGH STORYTELLING CIRCLE**  
**First Thursday of every month**  
**7.30pm-9.30pm at ThePlough@**  
**StAnne's, Barnstaple**

The Plough Storytelling Circle is a lively, forum for listening to and telling stories. Folk tales, mythology, modern stories, personal stories. All told in the time-honoured way of the oral tradition storyteller - from memory.

**£2.50 to include refreshments**



**ART ON FRIDAY in The Gallery**  
**10.30am – 2.30pm**  
**15 Sept, 22 Sept, 13 Oct, 27 Oct,**  
**10 Nov, 24 Nov**  
(twice per month – call for Jan/Feb 2024 dates)



**PLOUGH WRITERS**  
**Sat 30 Sept, 4 Nov, 9 Dec, 6 Jan**  
**10.30am – 1pm**

A fortnightly drop-in session. (Please note places are limited). Tutor Lizzie Bauer will host this monthly workshop, perfect for those who wish to develop their creative writing skills. **£15**

Please see our website for additional, upcoming workshops.





### AUTUMN IN WATERCOLOURS Day Workshop with John Piper Sat 2 Sept 10:30am - 4pm in The Gallery

A one day workshop in watercolours painting a lovely vibrant autumn scene. North Devon artist John Piper will guide you step by step through the process of creating an autumnal based scene using watercolours. Suitable for all levels including beginners. Image for illustration only. All equipment provided. (Max 12 participants) **£50**

### COUPLES CONNECTION YOGA WORKSHOP with Arwen Raddon from Santosha Healing Space. Sat 2 Sept 2pm - 4pm in the Dance Studio

Yoga can be a fun and relaxing way to connect with your loved one. You'll work with your partner through a series of shared poses and breathing exercises to deepen your sense of connection, trust and communication. No prior experience of Yoga required. Just wear comfortable clothes and bring a Yoga mat each, some drinking water and a sense of adventure! For more information, call or text Arwen on: 07488 430566

**£28 per couple, spaces limited to 6 couples**



### LIFE DRAWING with Jenny Arran A TASTER WORKSHOP Tues 12 Sept 11am - 1pm in the Dance Studio. A Taster workshop prior to the five week course. (details below). **£23 / £21 Supporters inc materials**

**5 WEEK COURSE Tues 19 Sept  
- Tues 17 Oct 11am - 1pm in the  
Dance Studio.** A relaxed life drawing  
class, developing confidence and  
drawing skills for all experience levels.  
We will be exploring different media  
and creative approaches to drawing and  
representing the figure.

**£115 / £105 Supporters inc materials**



### MAKING YOUR MARK with Penny Rowland-Hill Thurs 14 Sept - Thurs 19 Oct 10.30am - 1pm in the Gallery

Explore mark-making in greater depth, experiment and develop your creativity through the marks you make. Each session will concentrate on a different aspect of mark-making; you will be using a variety of methods and mediums, including paint, pastel, charcoal, ink and mixed media. All materials are provided. Suitable for all levels. **Cost per**

**workshop: £17 / £15 Supporters**



### YOGA FOR BETTER SLEEP WORKSHOP with Arwen Raddon from Santosha Healing Space.

**Sat 7 Oct 2pm - 4pm (Dance Studio)**  
Many of us struggle with sleep at some time in our life, and perhaps more so now than ever. Yoga provides many support mechanisms to help you prepare for a restful night. This practice will help you wind down and work on getting a better night's rest. No prior experience of Yoga required, just wear comfortable clothes, bring a Yoga mat, a pillow/cushion/large towel, a blanket and some water. For more information, call or text Arwen on: 07488 430566

**£15 per person, spaces limited to 12 people**



### WET-FELTING INTRODUCTORY WORKSHOP

with Penny Rowland-Hill  
**Sat 28 Oct 10.30am - 1pm  
in the Wet Workshop**

Come and create your very own piece of fabric, using an assortment of brightly coloured wool fibres, and learn the fun technique of wet-felting to produce a picture of your own design. All equipment and materials provided. Suitable for ages 8+

**£17 / £15 Supporters**

### WET-FELTING WORKSHOP

with Penny Rowland-Hill  
**Sat 28 Oct 2pm - 5pm  
in the Wet Workshop**

Learn the satisfying craft of felting, and be inspired to create a landscape or seascape using the wet-felting method to produce a fabric picture using an assortment of different coloured wool fibres. You can design this as a picture, wall hanging, or as a simple piece of flat felt to sew into and embellish later. All equipment and materials provided. (Adults.) Suitable for all levels from beginners to more advanced.

**£17 / £15 Supporters**





**INTRODUCTION TO WATERCOLOURS** with John Piper  
**Wed 1 Nov – Wed 6 Dec**  
**10:30am – 1pm** (Six week course)  
in the Dance Studio

Covering everything from the very basics and building week on week to give you all you need to continue on yourself with this versatile medium. Suitable for all levels including complete beginners. Image for illustration only. All equipment provided.

**£150** (+ £5 direct to tutor on first day)  
(Max 12 participants)

**DRAWING FROM NATURAL OBJECTS** with Esmé Clutterbuck  
**Fri 17 Nov 10.30am – 4pm** in The Gallery.

The session will begin with short drawing exercises followed by the chance to make longer drawings. The aim will be to promote spontaneity and confidence as well sharpening the ability to see and respond. We will experiment with a range of drawing materials and refer to some artists' drawings for inspiration. Suitable for all levels of experience.

**£50 / £45 Supporters** (includes materials)



**PLAY IN A DAY: 'THE LITTLE FIR TREE'** By Hans Christian Anderson (8-12 yrs)

**Tues 19 Dec 10-4** at ThePlough@Resurgence, Hartland

Unwrap this classic festive tale and recreate it in time to perform to family and friends at 3.30pm

**£5** (thanks to £10 per child funding via Resurgence)



**MOSAIC TASTER WORKSHOP**

with Juliette Hayward

**Sat 6 Jan 10.30am – 1.30pm** in the Wet Workshop

Make a Mosaic Mackerel (or similar sized fish) from upcycled broken crockery. 14yrs+ (Max 10 participants)  
**£40** (includes materials)

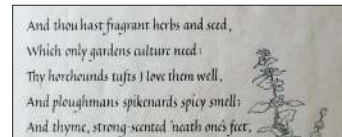


**INTRODUCTION TO ACRYLICS**

with John Piper **Wed 10 Jan – Wed 14 Feb 10.30am – 1pm** (Six week course) in the Dance Studio

An introduction to the acrylic medium. Starting with a blank canvas on week one and building week on week to a finished painting covering many different techniques and tips along the way. Suitable for all levels including complete beginners. Image for illustration only. All equipment provided.

**£160** (+£15 direct to tutor on first day).  
(Max 10 participants).



**CALLIGRAPHY TASTER WORKSHOP FOR BEGINNERS**

with Ruth Sutherland

**Sat 20 Jan & Sat 24 Feb 10.30am – 1.30pm** in The Gallery

Come and make some beautiful letters, and learn about different pens and inks. This session will be fascinating and full of fun, with loads of advice, and Ruth will provide you with all the equipment you will need. Age advisory: 12+  
**£40 per person per workshop** including all materials



**PAINTING WITH EARTH WORKSHOP** with Pete Ward

**Sat 3 Feb 10.30am – 4pm** in the Gallery

A practical introduction to the geology, history and creative applications of earth pigments from North Devon and Cornwall with environmental artist Peter Ward. No previous experience needed. Age 14+

All materials supplied but please bring your own paper and brushes if you wish.  
**£80/person** (Max 10 participants)



# Workshops at ThePlough@StAnne's

Please look at the website for full details of all workshops.

## INTRODUCTION TO SOAP MAKING **SOLD OUT**

**Thurs 7 Sept 7pm-9.30pm**

**at ThePlough@StAnne's, Barnstaple**

Tutor: Sarah Ward of Hedgewitch Soapery

**£35 All ingredients, soap making and safety equipment provided**



## POSY BASKET WILLOW BASKET WEAVING WORKSHOP

**Sun 10 Sept 10am-4.30pm**

**at ThePlough@StAnne's, Barnstaple**

Tutor: Jane Welsh

On this workshop you will be making a little round basket with a traditional base, French randed sides, a simple rod boarder and bow handle. A nice size for collecting eggs, posies or for children to play with.

**£60 + £10 for materials payable to the tutor on the day.**

## STONE CARVING 2 DAY WORKSHOP

**Sat 16 & Sun 17 Sept 10am-4pm**

**at ThePlough@StAnne's, Barnstaple**

Tutor: John Piper

This workshop will introduce you to the age old art of carving stone by hand. At the end of day two your completed stone carving will be yours to take away and put in pride of place indoors or out. Suitable for beginners.

**£110 + £40 for materials payable to the tutor on the day**



## INTRODUCTION TO WATERCOLOURS 3 Week Course

**23 Sept - 21 Oct (Alternate**

**Sats) 10am-4pm at ThePlough@StAnne's, Barnstaple**

Tutor: John Piper. Taking you through the basics of watercolour painting, you will be guided you step by step over the three days through all the aspects of watercolour painting. You will cover everything you need to know in order to progress at your own pace. Suitable for complete beginners as well as improvers.

**£120 All equipment provided**



## PRINT THE BEACH MONOTYPE WORKSHOP

**Sat 23 Sept, 10.30am-4.30pm at ThePlough@StAnne's, Barnstaple**

Tutor: Rosie Burns

Make a monotype using contact printing process and small Japanese woodcut print, on the theme of the beach - shells, seaweed, Hokusai / Chesterman waves.

**£45 + £15 for materials payable to the tutor on the day**



## AUTUMN IN WATERCOLOUR

**Sun 1 Oct 10am-4pm at**

**ThePlough@StAnne's, Barnstaple**

Tutor: John Piper  
This one day watercolour workshop will guide you step by step through the process of painting a vibrant and colourful autumnal scene.

**£50 All equipment provided.**

WORKSHOPS @ St Anne's

01805 624624 / [www.theploughartscentre.org.uk](http://www.theploughartscentre.org.uk)  
A 5% FEE WILL BE APPLIED TO ALL BOOKINGS





### FRUIT BASKET WILLOW WEAVING WORKSHOP

**Sun 1 Oct 10am-4.30pm**

**at ThePlough@StAnne's, Barnstaple**

Tutor: Jane Welsh

On this workshop you will make a broad, shallow basket suitable for displaying fruit. The Basket will have a tradition Irish portcullis base, walled sides and a rod or plaited boarder

**£60 + £10 for materials payable to the tutor on the day.**

### FESTIVE SOAP MAKING WORKSHOP

**Saturday 7 Oct 11am-3pm**

**at ThePlough@StAnne's, Barnstaple**

Tutor: Sarah Ward of Hedgewitch Soapery

This introductory workshop teaches you how to make your own hair and body soap using the traditional cold processed method and all natural ingredients.

**£50 All ingredients, soap making and safety equipment provided.**



### SPOOKY SOAP MAKING CHILDREN'S WORKSHOP

**Wed 25 Oct 2.30pm-4.30pm at**

**ThePlough@StAnne's, Barnstaple**

Tutor: Sarah Ward of Hedgewitch Soapery. Children aged 6+ (parents also welcome to purchase a ticket to partake in the workshop!). Make a selection of spooky shaped and seasonally scented soaps to celebrate the festivities with a real life soap witch! We'll explore different fragrances and colours to create a selection of fun soaps in a Halloween mould (that is yours to keep) for you to take home.

**£22 All ingredients, soap making and safety equipment provided.**



### INTRODUCTION TO SOAP MAKING

**Wed 25 Oct 7pm-9.30pm at**

**ThePlough@StAnne's, Barnstaple**

Tutor: Sarah Ward of Hedgewitch Soapery. Create your own natural soap using traditional methods in this mini workshop. Using plant based ingredients and a range of essential oils you will learn the techniques of traditional soap making and take home a loaf of soap which will cut into 8-10 bars of loveliness.

**£35 All ingredients, soap making and safety equipment provided**

### INTRODUCTION TO ACRYLICS 3 week course

**Sat 28 Oct-11 Nov 10am-4pm at**

**ThePlough@StAnne's, Barnstaple**

Tutor: John Piper. This course will take you through the basics of painting in acrylics. John Piper will guide you step by step over the lessons through all the aspects of acrylic painting starting with a blank canvas through to a finished artwork in week three. Suitable for complete beginners as well as improvers.

**£160 All equipment provided**



Terracotta  
Dragon Sculpture  
Pottery Workshop

### TERRACOTTA DRAGON SCULPTURE POTTERY WORKSHOP

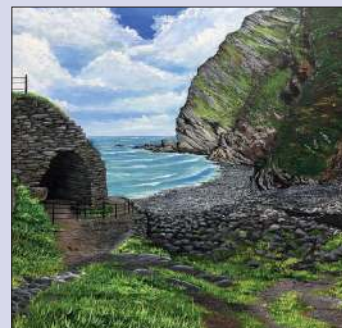
**Sat 28 Oct 10am-4pm at**

**ThePlough@StAnne's, Barnstaple**

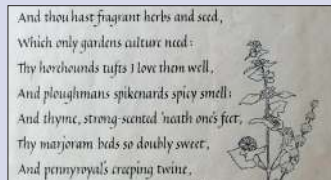
Tutor: Helen McCormick

Throughout the day Helen will teach you how to make a dragon sculpture using traditional hand building techniques. No experience necessary. Your sculpture will be ready to collect approximately 3-6 weeks after the workshop.

**£55.00 + £10 for materials payable to the tutor on the day.**







## ITALIC SCRIPT WORKSHOP

**Sat 11 Nov 10am-4pm**

**at ThePlough@StAnne's, Barnstaple** Tutor: Jo Turner.

Experienced instruction for those with some previous calligraphy experience (just having used a dip pen and being familiar with holding one will be sufficient). It will be a concentrated few hours of learning but fun and entertaining too – if you have a project you would like help with you are most welcome to bring it.

**£45 All equipment provided**

## INTRODUCTION TO THE ANCIENT ART OF NUMEROLOGY

**Sat 11 Nov 7-9.30pm** at

**ThePlough@StAnne's, Barnstaple**

Tutor: Jane McKeever. Would you like to understand the power of number in your life and the art of understanding the symbolic value of those numbers? You will learn how to interpret the numbers of your birth date and what they mean for you. How can we work with them for our benefit? You will learn how to work with the energies of your date of birth and other significant numbers in your life. **£25**



## HANDMADE BOOKS: CHINESE BOOKS AND JAPANESE ACCORDION

**Sat 18 Nov 10.30am-4pm** at

**ThePlough@StAnne's, Barnstaple**

Tutor: Megan Stallworthy

Learn to make these lovely oriental book forms, including side-sewn, non-adhesive bindings using beautiful, traditional Japanese stitching patterns, and a hardback concertina book made with a clever technique of interlocking folded pages. Perfect for a photo album, sketchbook or artist's book.

**£50 All equipment provided**



## CHRISTMAS GONK & DECORATIONS Pottery Workshop

## CHRISTMAS GONK & DECORATIONS POTTERY WORKSHOP

**Sun 19 Nov 10am-4.00pm** at

**ThePlough@StAnne's, Barnstaple**

Tutor: Helen McCormick. Make a

Gonk sculpture using traditional hand building techniques, and decorate your Gonk using coloured decorating slips. You will learn how to make your very own bespoke Christmas decorations for your tree. No experience necessary. These sculptures will be glazed and be ready to collect approximately 3-6 weeks after the workshop at St Anne's. **£55.00 +£15 for materials payable to the tutor on the day.**

## CHRISTMAS DECORATION WILLOW WEAVING workshop

**Sun 19 Nov 10am-4.30pm** at

**ThePlough@StAnne's, Barnstaple**

Tutor: Jane Welsh. Get into the spirit of Xmas! We will be making 2D reindeers, Xmas trees and stars and 3D conical Xmas trees, which you can decorate with lights, stars and foliage.

**£60 + £10 for materials payable to the tutor on the day.**



## NATURAL CLEANING PRODUCTS WORKSHOP

**Wed 22 Nov 7pm-9.30pm**

**at ThePlough@StAnne's, Barnstaple**

Tutor: Sarah Ward of Hedgewitch Soapery.

Interested in removing harsh chemicals from your family's home? This workshop introduces you to the simple ingredients needed to help keep your house clean and guides you as you make three different everyday cleaning products to take home.

**£35 All equipment provided**





**THE MAGICK OF THE VIKING RUNES** **Thurs 23 Nov 7pm**  
at **ThePlough@StAnne's, Barnstaple**. A spellbinding evening of enchantment where you can learn the deeper meanings of the Viking Runes and gain the knowledge needed to cast and read them.  
**£25 A bag of runes included in the price of the ticket**



**ACRYLIC SNOW SCENE**  
**Sat 2 Dec 10am-4pm** at **ThePlough@StAnne's, Barnstaple**  
Tutor: John Piper. A unique opportunity to paint a beautiful snow covered landscape bathed in a lovely warm winter sunshine glow. Step by step instruction will help you create an artwork to be proud of and blow away those winter blues!  
**£60 All equipment provided**



**CHRISTMAS CARD - WOODCUT PRINTMAKING**  
**Sat 2 Dec 10.30am-4.30pm** at **ThePlough@StAnne's, Barnstaple**  
Tutor: Rosie Burns  
Make a seasonal wood cut print. A relaxed informative day, exploring Japanese woodcut tools and ply, printmaking process and technique, a printing press and colour embellishing. Leave with a pack of handmade cards to send to loved ones.  
**£45 + £15 for materials payable to the tutor on the day**

**FESTIVE CANDLE MAKING**  
**Thur 7 Dec 7pm-9.30pm** at **ThePlough@StAnne's, Barnstaple**  
Tutor: Sarah Ward of Hedgewitch Soapery. In this mini workshop you'll be creating two natural, essential oil candles. All materials will be provided including glass jars, votives and tins. If you have a heatproof cup or vessel (maximum 200ml) you wish to fill please bring it with you. **£40**



**FESTIVE SOAP MAKING CHILDREN'S WORKSHOP**  
**Tues 19 Dec 2.30pm-4.30pm** at **ThePlough@StAnne's, Barnstaple**  
Tutor: Sarah Ward of Hedgewitch Soapery. Children aged 6+ (parents also welcome to purchase a ticket to partake in the workshop!)  
Make a selection of festive shaped and seasonally scented soaps to celebrate the festivities with a real life soap witch! We'll explore different fragrances and colours to create a selection of fun soaps in a Festive mould (that is yours

to keep) for you to take home ready for your festive bathing rituals.  
**£22 All ingredients, soap making and safety equipment provided.**



**WINTER WILDLIFE IN WATERCOLOURS**  
**Sat 20 Jan 10am-4pm** at **ThePlough@StAnne's, Barnstaple**  
Tutor: John Piper. A one day workshop painting Winter Wildlife in Watercolours. Full support and step by step tuition makes this workshop suitable for all levels.  
**£50.00 + £5 for materials payable to the tutor on the day.**





## DRAWN CAPITALS 'VERSALS' CALLIGRAPHY

**Sat 27 Jan 10am-4pm at**

**ThePlough@StAnne's,**

**Barnstaple** Tutor: Jo Turner.

Experienced guidance and instruction for beginners and those with some calligraphy experience wishing to try their hand at a different calligraphic skill. We will use both brush and pen to learn to draw versal capitals, in black ink, colourful paint and pencil. No experience needed. **£45**



## SEASONAL SOAP MAKING WORKSHOP

**Sat 27 Jan 10.30am-2.30pm**

**at ThePlough@StAnne's,**

**Barnstaple** Tutor: Sarah Ward of Hedgewitch Soapery. Do you love natural skincare products, want to reduce plastic waste in your home or start a new hobby? This workshop teaches you how to make your own hair and body soap using the traditional cold processed method and all natural ingredients! **£50**



## VALENTINE'S PRINTMAKING

**Sat 3 Feb 10.30am-4.30pm**

**at ThePlough@StAnne's,**

**Barnstaple**

Tutor: Rosie Burns

Make a Valentines themed wood cut print, look at Chinese zodiac animals, a personalised image to send or treasure. A relaxed informative day, exploring Japanese woodcut tools and ply, printmaking process and technique, a printing press and colour embellishing, option to make into a card to send.

**£45 + £15 for materials payable to the tutor on the day**

## FORESTS AND STREAMS IN ACRYLICS

**Sat 3 Feb 10am-4pm at**

**ThePlough@StAnne's, Barnstaple**

Tutor: John Piper

An acrylic painting workshop focusing on painting a forest stream as found across Exmoor and Dartmoor. Full step by step tuition with Artist John Piper makes this workshop suitable for all.

**£60.00 + £10 for materials payable to the tutor on the day.**



## MONET FOR NOTHING! ACRYLICS WORKSHOP

**Sat 2 March 10am-4pm at**

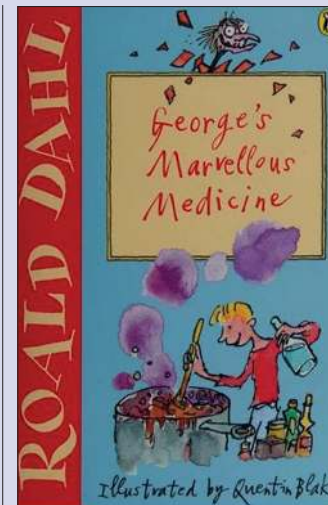
**ThePlough@StAnne's, Barnstaple**

Tutor: John Piper

Come along and paint your own "Monet".

This workshop with Artist John Piper will give you the opportunity to paint in the footsteps of the old master but with a modern acrylic medium.

**£60.00 + £10 for materials payable to the tutor on the day.**



## PLAY IN A DAY - GEORGE'S MARVELLOUS MEDICINE

(8-12 yrs)

**Mon 23 Oct 10am-4pm**

**ThePlough@StAnne's,**

**Barnstaple.**

What else could a marvellous medicine do...come and have fun creating a performance of Roald Dahl's classic George's Marvellous Medicine. With some fun props and puppetry!

With a 3.30pm sharing performance.

**£2.50** With thanks to funding from The Davie-Barnstaple Trust

Please look at the website for full details of all workshops.





### OLIVIA BRELSFORD-MASSEY

**Sat 2 Sep to Sat 30 Sep**

**Preview: Sat 2 Sep 2pm**

Through materials including clay, words, film, fabrics, and live elements, a whole landscape or environment emerges.

Within this temporary ecosystem, you are invited to forage and explore how systems and processes existing within our bodies and minds are akin to those that occur in nature.



### KATHERINE LOCKETT-CLARK: Artists Wall: Illuminated

**Sat 2 Sep to Sat 30 Sep**

**Preview: Sat 2 Sep 2pm**

Following on from her award winning work, *A Bird in the Hand*, Katherine is developing a series of photographic work which continues to examine the tender and symbiotic relationship between nature and humans.

### RUTH BATEMAN

**Tue 10 Oct to Fri 27 Oct**

**Preview: Mon 9 Oct 6pm**

*'I believe in Hope, in unity. I paint intuitively and with expression.'*

Ruth has a primal connection to wilderness. She explores the landscape with her body: rock-climbing, mountaineering, cycling, feeling the earth rumble through her.



### GRAHAM FISH Artist's Wall

**Tue 10 Oct to Fri 27 Oct**

**Preview: Mon 9 Oct 6pm**

We are exhibiting a biro drawing by Graham which will take up the whole of the artist's wall. It took him 7 months and used up 18 biros.

He says "I like drawing and began using biro by accident one family holiday. Over the years the drawings have increased in size just to add to the challenge."



### KITCHEN CONNECTIONS

**Paintings by Henrietta Paine**

**Tue 31 Oct to Sat 25 Nov**

**Preview: Fri 3 Nov 6pm**

'Kitchen Connections' have been created in response, and in honour of the next generation of young adults, at their time of stepping out into the world. The paintings mark a time when small meet ups were punctuated with intervals of lockdown and large parties were illegal, (save exclusively for our government, it transpires).



### MARION ELMES

**Tue 31 Oct to Sat 25 Nov**

*'Wherever my paintings lead, I follow.'*

Semi-abstract paintings with gestural biomorphic images.



### CHRISTMAS CRAFT FAIR

**Wed 29 Nov to Sat 23 Dec**

**Preview: Wed 29 Nov 6pm**

The annual Plough Christmas Craft Fair in the main gallery is back! Opening 10am and running through until 8pm everyday except Sundays and Mondays we'll be presenting a fascinating cross section of local craft. There will always be some makers in the gallery to answer questions and have a chat. This year watch out for a special young makers event Sunday 3 December 1 - 5pm in the Plough Cafe.



**Artists Wall: Jenny Arran**  
**Wed 29 Nov to Sat 23 Dec**  
**Preview: Wed 29 Nov 6pm**  
 "My work is inspired by the physical 'bodies' of nature, the sense of movement and entanglement and the contrasts of light and shade, stillness and energy.  
 I will be showing a series of paintings on wood and canvas exploring the North Devon landscape."



## SAILS AND TALES OF CLOVELLY

### Stephen Perham and Rachel Perham

**Sat 13 Jan to Sat 17 Feb**  
 Born and brought up in the cobble stoned streets of Clovelly, brother, and sister, Stephen, and Rachel Perham, come from a seafaring family. Sailing, fishing, and lifeboats have been their life.  
 The characters of the village and the stories they told were as much a part of their childhood as the pebbled beached shoreline.  
 Painting and illustrating the village in their own individual way helps to keep those characters alive.



**Expressions of an intimate ecology – an ongoing conversation with earth pigments in southwest England**  
**PETER WARD Sat 13 Jan 2024 to Sat 17 Feb 2024.** For the last 17 years Peter Ward has been at the forefront of earth pigment research and painting in the UK. His journey began in North Devon, looking into the locally significant pigment Bideford Black and has since expanded, including contributions to national and international exhibitions, projects and publications.

EXHIBITIONS



**RHS**

Garden Rosemoor

[rhs.org.uk/rosemoor](https://rhs.org.uk/rosemoor)

## What's on at RHS Rosemoor

### Great Hobby Weekend, 16 - 17 September

Discover some of the nation's best pastimes – from surfing, rambling, photography, and birdwatching to axe throwing plus a whole range of arts and crafts activities.

### Festival of Flavours, 7 - 8 October

Inspiring cookery demonstrations, talks and tours in celebration of our Heritage Devon Apple Orchard harvest. Enjoy live music and our food and craft market.

### Winter Sculpture Exhibition, 11 November - 31 January

Enjoy the long shadows cast by a specially curated collection of inspirational artwork by local and national sculptors, set against the backdrop of winter colour and texture.

### Glow, 16 November - 30 December

Explore our new light trail through the gardens with sound and interactive elements plus different entertainment every evening. Various dates, please check details online.



RHS Registered Charity No: 222879/SC038262

## The Plough is so grateful for the support of our Business Supporters and we would encourage everyone to use their services if you can

Witten Park Vets  
Glover Stanbury  
Xanadu  
Pee Wee's HomeCare  
Torr. Dental Prac.  
Dartington Crystal  
Bond Oxborough  
Mike Wye Assoc  
Tamar Trading

Viva! Violins  
Pearce Homes  
West Country Maintenance Service  
Jamaica Press  
Dafforns/RPB funerals Torr  
Rangemoors, Winkleigh  
Nalu Homes  
Smytham Hol Park  
David Wilson Partnership

Lisarb Energy  
S and G Carpets  
Arlington Court  
Philip Milton  
Seldons Solicitors  
CWB Landscaping  
Atlantic Rest  
NJ Martin Windows  
Marwood Gardens

John Fitzgerald Photography  
Rosemoor  
JAG  
Fab Funky  
Bell Inn Monkleigh

Contact Gerard if you'd like to enquire  
about becoming a Business Supporter:  
[gerard@theploughartscentre.org.uk](mailto:gerard@theploughartscentre.org.uk)

As seen  
on BBC TV

### All aspects of hard & soft landscaping undertaken

CWB serve North & Mid-Devon and are  
proud to offer a quality service covering:

All aspects of Brickwork, Patios, Fencing,  
Tree Work, Decking & Driveways, Gravel Resin  
Bound driveways laid, at reasonable prices.

Fully insured & we offer a free quotation  
& design service.

CWB undertake small and large projects  
to suit all budgets

Call Christien NOW on 07756 649514



Call us on Tel 01237 421673  
[info@njmartinwindows.co.uk](mailto:info@njmartinwindows.co.uk)  
[www.njmartinwindows.co.uk](http://www.njmartinwindows.co.uk)

Find us on 

### NJ Martin Windows Ltd

01237 421673

Quality Installers & Suppliers of:

- Windows ● Doors
- Conservatories ● uPVC Products
- Fascia's, Soffits & Guttering
- Free Quotations

*Buy with confidence from a company you can trust*



**Nestled in the heart of North Devon,  
Marwood Hill Gardens are a hidden gem, and  
must see for visitors and locals alike.**

These valley gardens span over 20-acres, are home  
to four National Plant Heritage collections and  
showcase three stunning lakes, rare trees & shrubs,  
and colourful surprises throughout each season.  
Not only a haven for wildlife, the gardens are also  
the perfect environment to explore, get back in  
touch with nature and be inspired.

Light bites available in the picturesque (and award  
winning) Garden Tea Room. Well behaved dogs on  
leads are also welcome.

For opening times & prices please check our  
website: [www.marwoodhillgarden.co.uk/  
opening-times-and-entry-prices.html](http://www.marwoodhillgarden.co.uk/opening-times-and-entry-prices.html)





## Heating, Cooking *and Living.*

To see one of the largest selections of fires, stoves and range cookers in the South West, many of which are on live display, visit Rangemoors. Whether you want to add warmth and atmosphere to your living space or cook up a storm, we have the perfect appliance for you and your home. Visit our showroom, or see our websites for more information.

**Gas, electric, wood,  
multi-fuel stoves & fires**  
**Flues, chimneys & installations**  
**Range cookers & cook stoves**  
**Outdoor kitchens, ovens & grills**

**Call 01837 680068**  
**[www.rangemoors.co.uk](http://www.rangemoors.co.uk)**



**Rangemoors**

# MIKE WYE

## The Home Of Sustainable Building

We supply our comprehensive range of traditional natural and sustainable building and decorating products to builders, conservation specialists and home owners throughout the UK

Lime Mortars & Plasters | Natural Insulation | Breathable Paints  
Polished Plasters | Clay Plasters | Tools | Technical Advice



Tel: 01409 281644 | [www.mikewye.co.uk](http://www.mikewye.co.uk) | [sales@mikewye.co.uk](mailto:sales@mikewye.co.uk)

the plough  
ARTS CENTRE

We welcome  
your ideas!

Can't see anything  
that appeals to you?

Send your ideas for future  
live events and films to  
richard@theploughartscentre.org.uk  
or call him on 01805 622552

TORRINGTON DENTAL PRACTICE



Trusted Caring Dedicated

Providing all your dental needs in a  
friendly and caring environment

Phone 01805 623657  
and join our Tarka Dental Care Plan  
[www.torringtondental.co.uk](http://www.torringtondental.co.uk)



Quality, tailor made care in your own home  
CQC "GOOD" rated local company  
with a dedicated, professional team.

Contact Hayley or Phil on: 01805 628066

or email:

[peeweepersonalhomecare@btconnect.com](mailto:peeweepersonalhomecare@btconnect.com)



XANADU

TOP QUALITY GREENGROCERS

Stockists of health foods

Wholesale suppliers to the  
catering and retail trade

Local daily deliveries

24 South Street, Torrington

01805 622709



THE BELL INN  
MONKLEIGH

A traditional thatched inn with a smokehouse  
and grill menu, local ales and large beer  
garden, just 10 minutes drive from Torrington



weddings ~ parties ~ catering ~ bar hire

[www.thebellinnmonkleigh.co.uk](http://www.thebellinnmonkleigh.co.uk)  
01805 625313

Philip J Milton &  
Company Plc

Wealth & Portfolio Management\*  
Wills, Trusts & Attorneyships  
Probate & Estate Administration  
Financial Advice, ISAs, Pensions\*

\*Authorised & Regulated by the Financial Conduct Authority

Visit us online at [www.miltonpj.net](http://www.miltonpj.net)

Philip J Milton  
& Company Plc

Call us for a free no-obligation  
chat on 01271 344300 or email  
[info@miltonpj.net](mailto:info@miltonpj.net)





SIGNS WRAP PRINT  
STATIONERY CLOTHING

01409 254585



**£100 OFF**  
Funeral Plans  
with this  
Advert

**Dafforn & Son**

~ Independent Funeral Directors ~

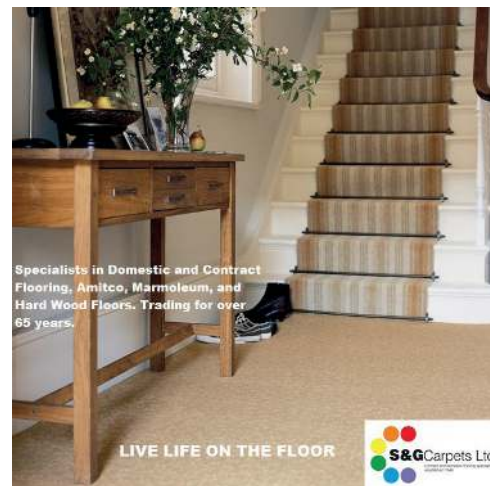
6 New Street, Great Torrington EX38 8BN

**Call 01805 622 263**  
**www.rpbfunerals.com**

FUNERAL PLANS FROM  
**Golden Charter**  
Smart Planning for Later Life



EGU 471 28952 - 0728



Specialists in Domestic and Contract  
Flooring, Amtico, Marmoleum, and  
Hard Wood Floors. Trading for over  
65 years.

LIVE LIFE ON THE FLOOR



John Fitzgerald

07534 425 225

Portrait & Headshot  
Photography

**ImageFitz**

PHOTOGRAPHY & VIDEOGRAPHY

Event & Advertising  
Videography

info@imagefitz.com

www.imagefitz.com

**Smytham**  
Holiday Park



www.smytham.co.uk 01805 622110



A family run park, a rural retreat in the heart of North Devon.  
Caravans, Tents, Motorhomes, Camping Pods, Holiday Homes.  
Direct access to Tarka Trail. Close to moors & beaches.  
Outdoor Pool, Sun Terrace, Play Area, Games Room, Family Bar

For all your building & DIY  
needs...

**Talk to Tamar**

BUILDING SUPPLIES & DIY CENTRES  
COMPETITIVE PRICES  
EXPERT ADVICE  
DELIVERY SERVICE

**www.tamartrading.com**

Holsworthy Torrington  
01409 253555 01805 626333  
Bodmin  
01208 264700






National Trust

## Arlington Court

**& the National Trust Carriage Museum**

A hidden jewel on the edge of Exmoor, Arlington has something for everyone. From outdoor adventures to scrumptious cakes, rainy day crafting to fun-filled events, there is always something to discover.

[www.nationaltrust.org.uk/arlington-court](http://www.nationaltrust.org.uk/arlington-court)  
01271 850296 | EX31 4LP


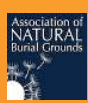



## Atlantic Rest Natural Burial

**at Penlow Field, Woolley,  
Nr Bude EX23 9PP**

Offering natural burial and ashes burial off the North Cornish Coast in a tranquil and eco-friendly environment.

If you would like to know more, or would like a leaflet in the post - please contact Sheridan on 01288 381 836 or visit the website.

[www.atlantic-rest.co.uk](http://www.atlantic-rest.co.uk)

# Westward IT

[www.westwardit.com](http://www.westwardit.com) | [info@westwardit.com](mailto:info@westwardit.com)

## TECHNOLOGY SUPPORT FOR BUSINESS

- Networks / VPN / WiFi
- Server Support
- Virtualisation
- Cloud Computing
- Backup and Disaster Recovery
- PC and Mac support
- Management Consulting
- Software integration and development
- Project Management











**CALL US FREE ON 0808 252 2700**

## Become a **Plough Supporter** & save money while you are enjoying yourself!

Plough Supporters save money on every film, most live events and in-house workshop for a whole year. Over 1000 Plough Supporters can't be wrong! By joining the Supporters Club you are helping to ensure the future of The Plough.

As a Supporter you will get a £1 off full price film tickets and up to 25% off live events & workshops. Supporters also enjoy 10% off food and drinks at the Plough Café up to 5pm every day. You can also have a say in how the Plough is run... As Plough

Supporters you are eligible to stand for election on to the Council of Management.

Pick up a form at the Box office, join online, or call us for further details – 01805 624624

**design** | concepts | logos | brand identity  
**print** | stationery | forms | brochures | books  
**signs** | posters | banners | exhibitions | signs  
**web** | design | domains | seo | hosting  
**office** | supplies | consumables | furniture



**JAMAICAPRESS**

design • print • signs • web • office

we're local - call **01237 452333**

[info@jamaicapress.co.uk](mailto:info@jamaicapress.co.uk)

**GS GLOVER  
STANBURY**

CHARTERED ACCOUNTANTS

[www.gloverstanbury.co.uk](http://www.gloverstanbury.co.uk)

[info@gloverstanbury.co.uk](mailto:info@gloverstanbury.co.uk)

**Making your  
hard work  
count**



ICAEW  
CHARTERED  
ACCOUNTANTS



Barnstaple 01271 375271  
Bideford 01237 471881

Building quality homes  
in North Devon.



**PEARCE**  
HOMES

[pearcehomes.co.uk](http://pearcehomes.co.uk)

Are you looking for a unique space for your  
private booking, event or party?

Why not hire The Plough Arts Centre or  
ThePlough@StAnne's in Barnstaple?

Spaces of all size are available by arrangement for weddings,  
meetings, parties, workshops, private film screenings,  
conferences, charity events, performances, school productions,  
gigs and other live events up a maximum of 240 people at The  
Plough & 60 at ThePlough@StAnne's. Our hire charges are  
competitive. High quality catering & bar available.

Please ring 01805 622552/624624 (The Plough)  
or 07988 917515 (ThePlough@StAnne's) or email  
[hires@theploughartscentre.org.uk](mailto: hires@theploughartscentre.org.uk) to discuss your requirements.

**Viva!**  
violins

Antique and handmade instruments

Student violins, violas and cellos

Stringed instrument rental

Restoration and repair

Accessories and cases

Bow re-hairing

Free expert advice

Telephone 01271 830536/07811 822026

[www.vivaviolins.co.uk](http://www.vivaviolins.co.uk)

[rebecca@vivaviolins.co.uk](mailto:rebecca@vivaviolins.co.uk)

**Bond Oxenborough Phillips**  
Changing lifestyles

For every key  
there's a door  
and behind  
every door  
there's a home...

**Proud to support  
The Plough's Open  
Air Theatre season**





Renewable energy can provide us with all the energy we need. We're leading the charge in Brazil, Portugal and now the UK.

[www.lisarb.energy](http://www.lisarb.energy)



## Nalu Homes

We Build Zero Carbon, Passive House Plus Homes Across The Southwest

Visit >> [www.nalu.homes](http://www.nalu.homes)

Naturally Intelligent Living



[www.davidwilsonpartnership.co.uk](http://www.davidwilsonpartnership.co.uk)



**Witten Park  
VETS**

Heywood Road, Northam, EX39 3QA  
Tel: 01237 473278. All pets seen.

[www.medivet.co.uk/vet-practices/northam/](http://www.medivet.co.uk/vet-practices/northam/)

North Devon's

*Hot Spot*



- Shops & Café
- Craft Demonstrations
- Handcasting & Activities\*
- Factory Experience
- Kids Go Free

**DARTINGTON**  
CRYSTAL

\*Booking is essential  
Torrington Devon EX39 7AN  
T 01805 626242  
E [tours@dartington.co.uk](mailto:tours@dartington.co.uk)  
[www.visitdartington.co.uk](http://www.visitdartington.co.uk)

Follow us



**w m s**

[www.wms-gb.com](http://www.wms-gb.com)  
Building Partnerships

In association with  
**W&M**  
WILLIAMS & MARTIN LTD  
[www.williams-martin.co.uk](http://www.williams-martin.co.uk)  
Painting partnerships

# FabFunky

A north Devon design studio that specialises in the creation of unique art and luxurious home products that feature the illustrations of British artist Kelly Stevens-McLaughlan.



[www.fabfunky.co.uk](http://www.fabfunky.co.uk)  
01805 603325

## Property

Buying & Selling your home  
(Freehold and Leasehold)

Mortgages

Landlord & Tenant

Leases

Commercial Property

Agricultural Property

Buying & Selling Land

Gifting Property

## Business

Business Sales & Purchases

Commercial Contracts

Disputes

Employment Law

Terms of Business

Company & Partnership

## Litigation

Personal Injury

Family Matters

Divorce

Property / Boundary Disputes

Estate Claims

Consumer/Debt Issues

Employment Disputes

Professional Negligence

## Private Client

Wills

Powers of Attorney

Advising the Elderly

Court of Protection

Tax Planning

Probate and Estate

Administration



# seldons

solicitors

18 The Quay, Bideford

[www.seldons-solicitors.co.uk](http://www.seldons-solicitors.co.uk)

01237 479121



# the plough ARTS CENTRE

**£5  
Torridge  
Deal\***

## TICKETS:

**£7.50 FULL PRICE / £6.50  
CONCESSIONS / PLOUGH  
SUPPORTER**

**£5 TORRIDGE DEAL\***

**£10 MINISTRONE  
MATINÉE\*\*** (A seat, a soup +  
tea or coffee)

## BOX OFFICE:

**01805 624624**

**NEW: £5 Torridge Deal\***  
has been made possible by  
a generous new grant by  
Torridge District Council,  
allowing us to offer cinema  
tickets for just £5 to residents  
of Torridge.

All bookings will incur a 5% booking fee.

\*Proof of home address within the Torridge  
area may be required.

\*\*On selected screenings, a seat, soup and a  
tea or coffee.



## GRAN TURISMO: THE MOVIE

**29 Aug 2pm & 7.30pm,  
30 Aug 2pm, 31 Aug 7.30pm,  
1 Sep 11am & 2pm**

The ultimate wish fulfilment tale of a  
teenage Gran Turismo player whose  
gaming skills won a series of Nissan  
competitions to become an actual  
professional race car driver. Based on  
a true story.

Dir. Neill Blomkamp (2023) 2h 15m  
Darren Barnet, David Harbour, Orlando Bloom



## ALLELUJAH

**30 Aug 7.30pm, 31 Aug 2pm**

Adaptation of Alan Bennett's story of  
a geriatric ward in a small Yorkshire  
hospital threatened with closure.

Dir. Richard Eyre (2022) 1h 39m  
Stars: Jesse Akele, Louis Ashbourne Serkis, Jessica  
Baglow, Judy Dench and more



## AND THEN COME THE NIGHT- JARS

**9 Sep 7.30pm, 12 Sep 7.30pm,  
13 Sep 2pm & 7.30pm,  
14 Sep 2pm, 16 Sep 7.30pm**

Adapted for the screen from Bea  
Roberts' multi-award-winning stage play,

And Then Come the Nightjars tells the  
story of an unlikely friendship between  
a Devon farmer and the vet who is  
assigned to cull his precious herd.

Dir. Paul Robinson (2023)  
Stars: Nigel Hastings & David Fielder



## THE UNLIKELY PILGRIMAGE OF HAROLD FRY

**19 Sep 7.30pm & 20 Sep 2pm**

Harold is an ordinary man who has  
passed through life, living on the side  
lines, until he goes to post a letter one  
day...and just keeps walking.

Dir. Hettie Macdonald (2023) 1h 48m  
Stars: Jim Broadbent, Penelope Wilson, Earl Cave



## AFIRE

**20 Sep 7.30pm & 21 Sep 2pm**

A group of friends in a holiday home  
by the Baltic Sea where emotions run  
high as the forest around them catches  
fire. In German with English subtitles.

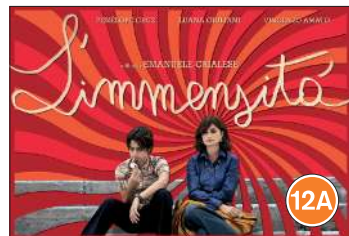
Dir. Christian Petzold (2023) 1h 42m  
Stars: Thomas Schubert, Paula Beer, Enno Trebs



**MY BIG FAT GREEK WEDDING 3**  
**22 Sep 2pm, 23 Sep 7.30pm,**  
**26 Sep 7.30pm, 27 Sep 7.30pm,**  
**28 Sep 2pm (relaxed), 29 Sep 2pm**

Join the Portokalos family as they travel to a family reunion in Greece for a heartwarming and hilarious trip full of love, twists and turns.

Dir: Nia Vardalos (2023)  
 Stars: John Corbett, Elena Kampouris, Lainie Kazan



**L'IMMENSITA** (Italian with English Subtitles)  
**Tue 3 Oct 7.30pm & Thu 5 Oct 2pm** Rome, 1970s: Adriana, a preteen girl, moves into a new apartment with her family. She rejects her name and identity, ultimately deciding to convince everyone that she is a boy.

Dir: Emanuele Crialese (2022) 1h 40m  
 Stars: Penélope Cruz, Vincenzo Amato, Luana Giuliani



**PAST LIVES**  
**Tue 10 Oct 7.30pm, Wed 11 Oct 2pm, Wed 11 Oct 7.30pm**  
 Friends Nora and Hae Sung are wrested apart after Nora's family emigrates from South Korea. Twenty years later, they are reunited for one fateful week as they confront notions of love and destiny.

Director/Writer: Celine Song Stars: Greta Lee, Teo Yoo, John Magaro

## Become a Business Supporter of The Plough!

### What are the benefits?

All Business Supporters are thanked in the Plough Programme via a full colour advert. The programme is printed twice a year and sent out to our extensive (5,000 strong) mailing list and provided to many arts and tourist destinations across the county. Around 15,000 programmes are printed so that's a lot of eyes on your ad!

Your support will be highlighted in our digital newsletter 'Plough-On' which is distributed to around 2,000 Plough Supporters.

Your businesses name will be displayed on the Business Supporters board in the foyer of the Arts Centre - seen by everyone who visits us.

Your logo and a description of your business will feature on our Business Supporters page of the website and your logo and a link to your own website will also feature on our home page.

For more information on all these benefits and more, contact:  
 Gerard Fawcitt: [gerard@theploughartscentre.org.uk](mailto:gerard@theploughartscentre.org.uk)

## Relaxed Screenings at The Plough

Our relaxed screenings ensure the environment is adjusted to accommodate people who would appreciate a sensory-friendly space, such as a relaxed attitude towards noise and movement, slightly lowered volume and lights at a dim level. Audience members also are more than welcome to leave their seats to roam around.

For other films, please go to [www.theploughartscentre.org.uk](http://www.theploughartscentre.org.uk)